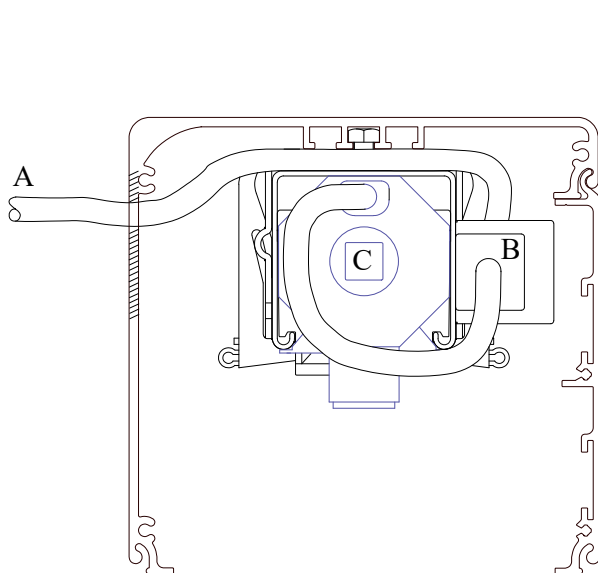
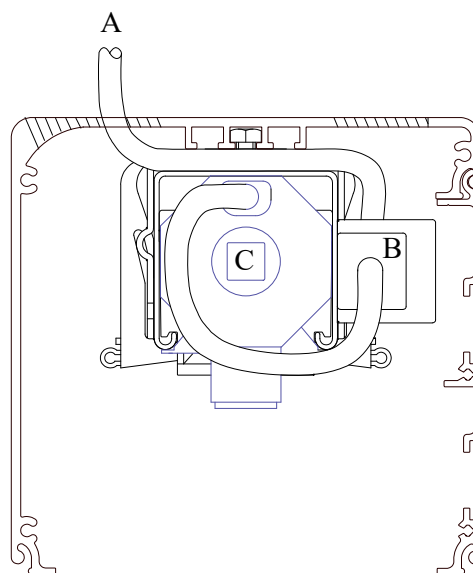


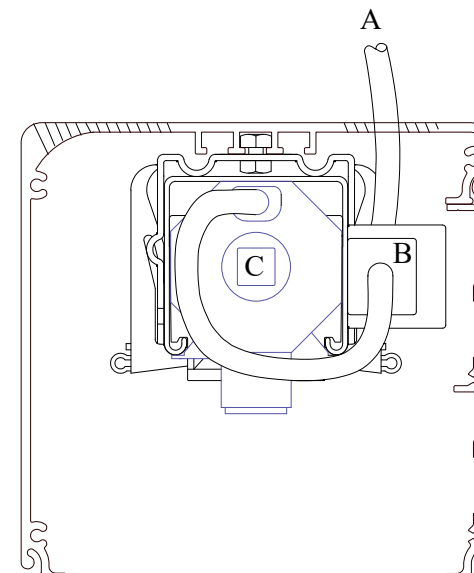
4.2 Pelmet Type A & B - Pelmet Power Connection Options



Face Entry



Top Entry 1



Top Entry 2

Shaded areas indicate usual entry for power to blind for both Face and Top

Note - 32mm min dia hole required for plug ends.

A - Power from dwelling to receiver / plug fitting
B - Receiver / plug fitting
C - Motor