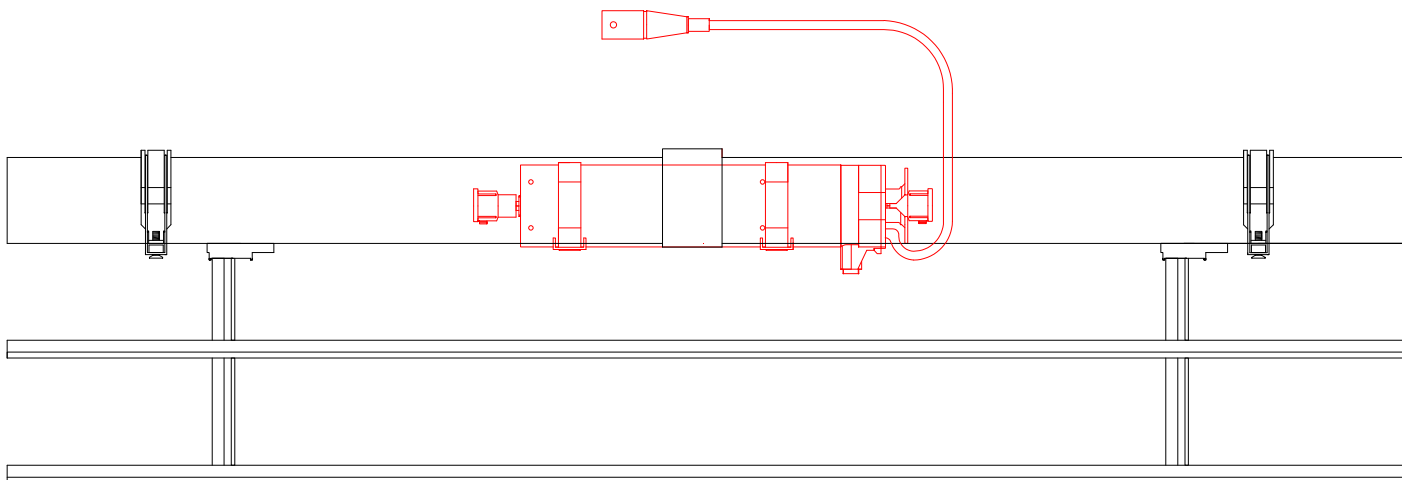


## Location Of Power

As a guide the power should be located centrally across the width of the unit. Section images below highlight the feed based on the pelmet options.

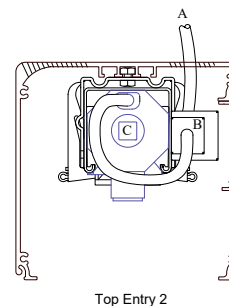
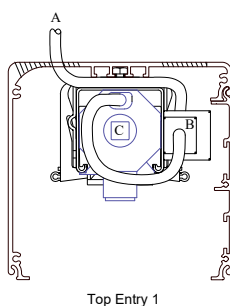
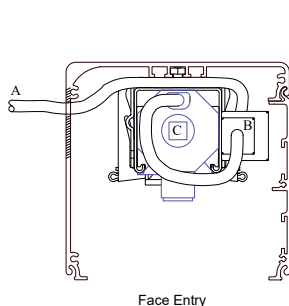
### Motor Location In Drive Assembly

- \* Motor located in centre of the drive rail assembly
- \* Power cable is always located on the RHS when viewed from outside of building looking in
- \* Cable length from motor is 900mm



## Evaya Pelmet Type A & B

- A - Indicates Power
- B - Indicates Hirschmann Plug Connection
- C - Indicates Motor



## Evaya Pelmet Type C - Mounting Plate

- A - Indicates Power
- B - Indicates Hirschmann Plug Connection C - Indicates Motor

