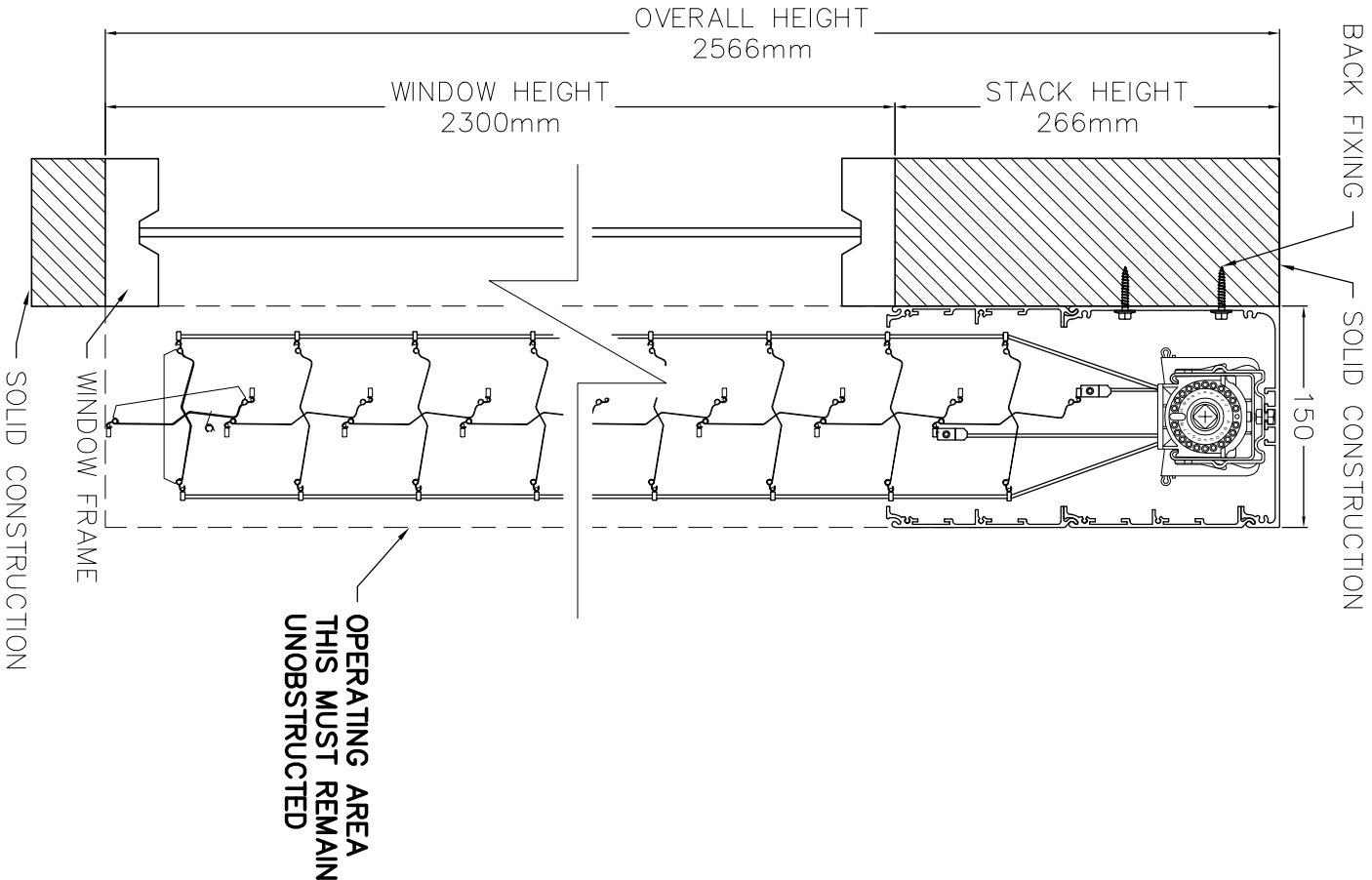


PELMET TYPE B 266

- DESIGNED TO CONCEAL THE STACK HEIGHT OF EV93d'S FOR WINDOWS UP TO 2300mm HIGH

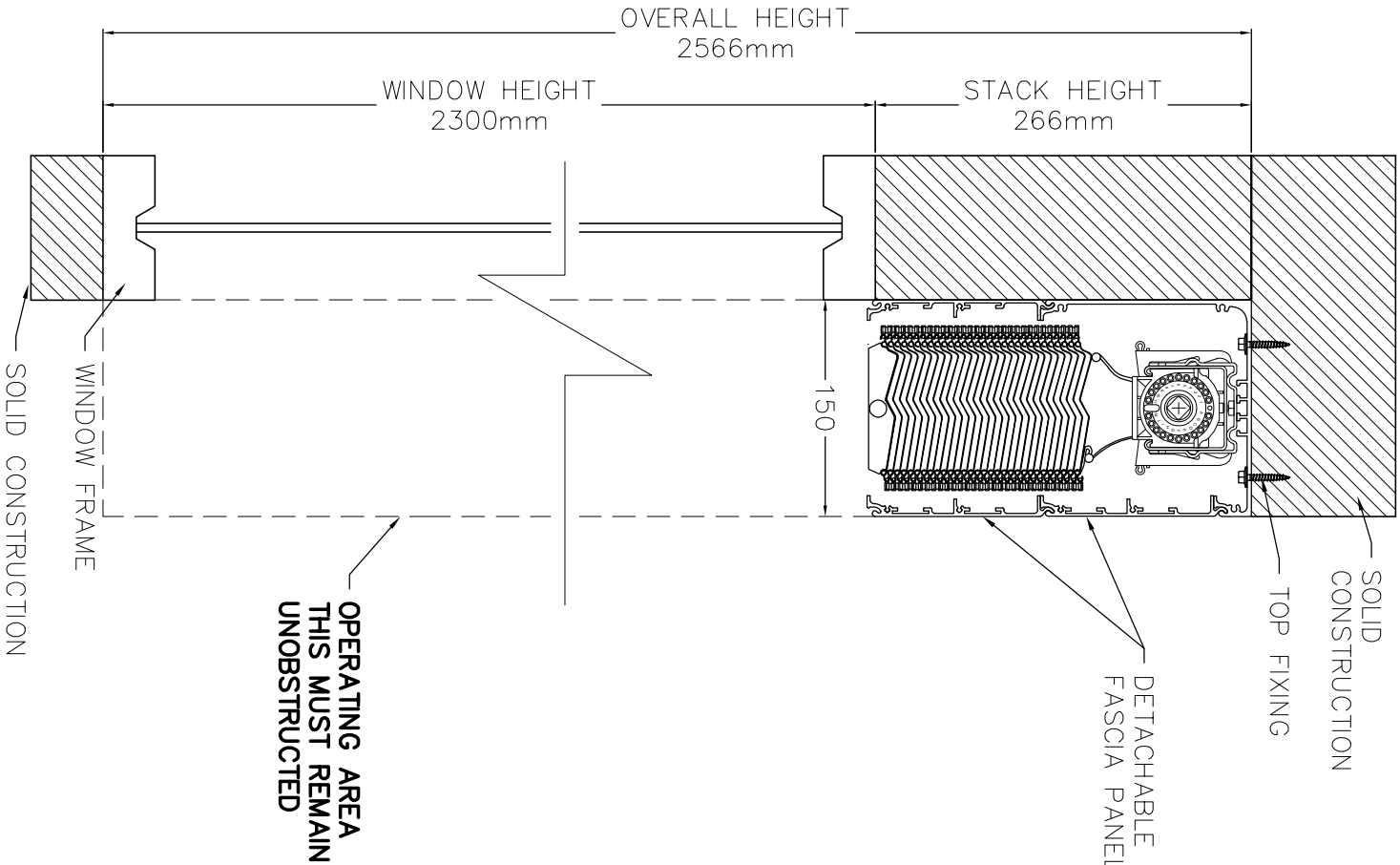
ev93d LOWERED

BACK FIX



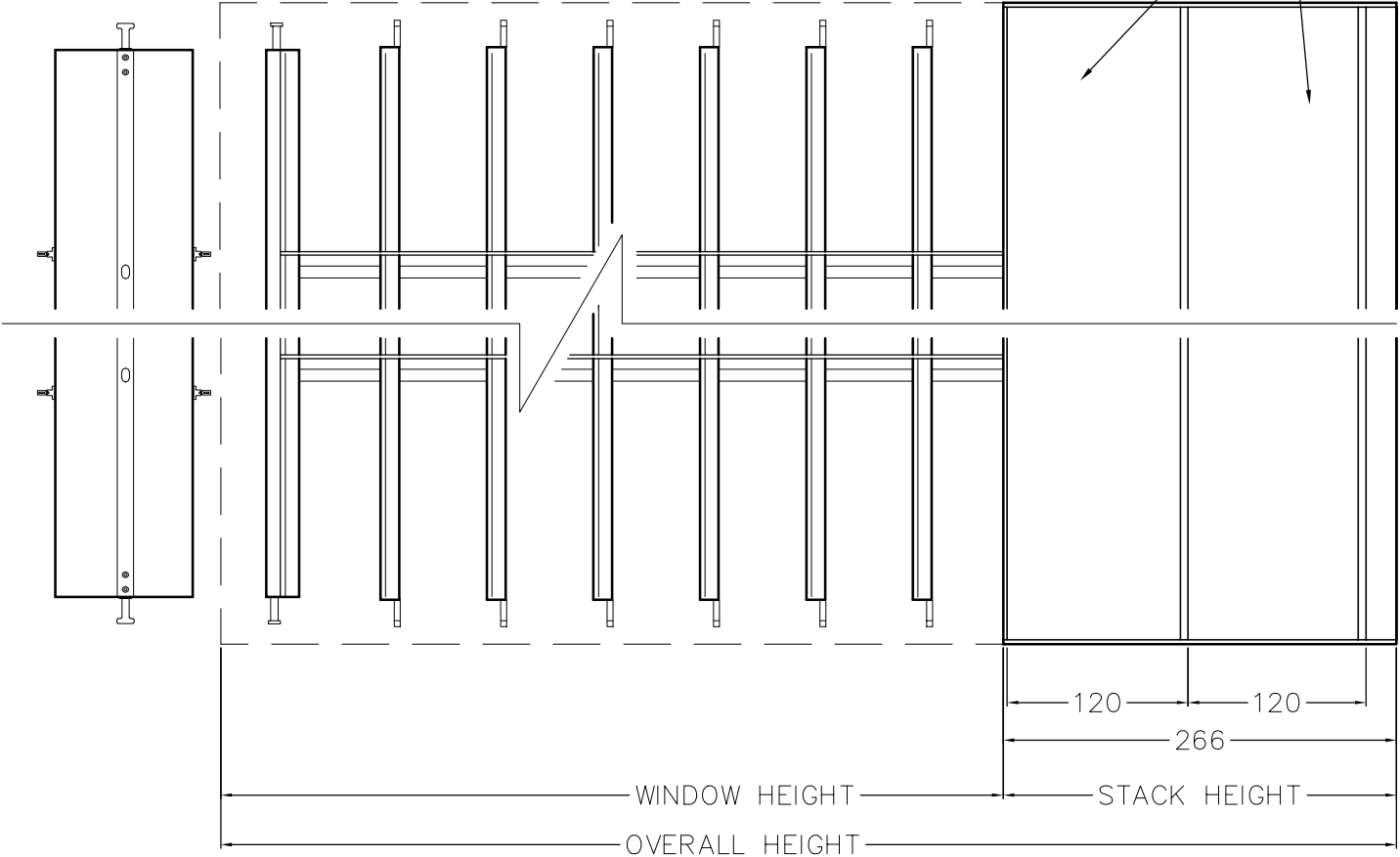
ev93d RAISED

TOP FIX



ev93d LOWERED

FRONT VIEW



NOTES

- PELMET TYPE B 266 – DESIGNED TO CONCEAL THE STACK HEIGHT OF THE EV93d'S FOR WINDOWS UP TO 2300mm HIGH
- TOP AND BACK FIXING OPTIONS AVAILABLE FOR FACE FIT AND RECESS APPLICATIONS

PLANNED USE OF AWNING WINDOWS, STORM BARS, FUTURE INSTALLATION OF DOOR HARDWARE AND OTHER ITEMS THAT MAY CAUSE POSSIBLE INTERFERENCE MUST BE TAKEN INTO CONSIDERATION AND AVOIDED

- DASHED OPERATING AREA OF BLIND MUST REMAIN UNOBSTRUCTED
- INTERFERENCE MUST BE TAKEN INTO CONSIDERATION AND AVOIDED
- FIXINGS TO BE 14G BATTEN SCREWS OR SIMILAR
- FIXING SPACING TO BE SUITABLE TO BLIND SIZE, 600mm OR SIMILAR