

TYPE C - MOUNTING PLATE DESIGNED TO BE TOP FIXED INTO A CONSTRUCTION REVEAL OR CAVITY

ev93d LOWERED

TOP FIX

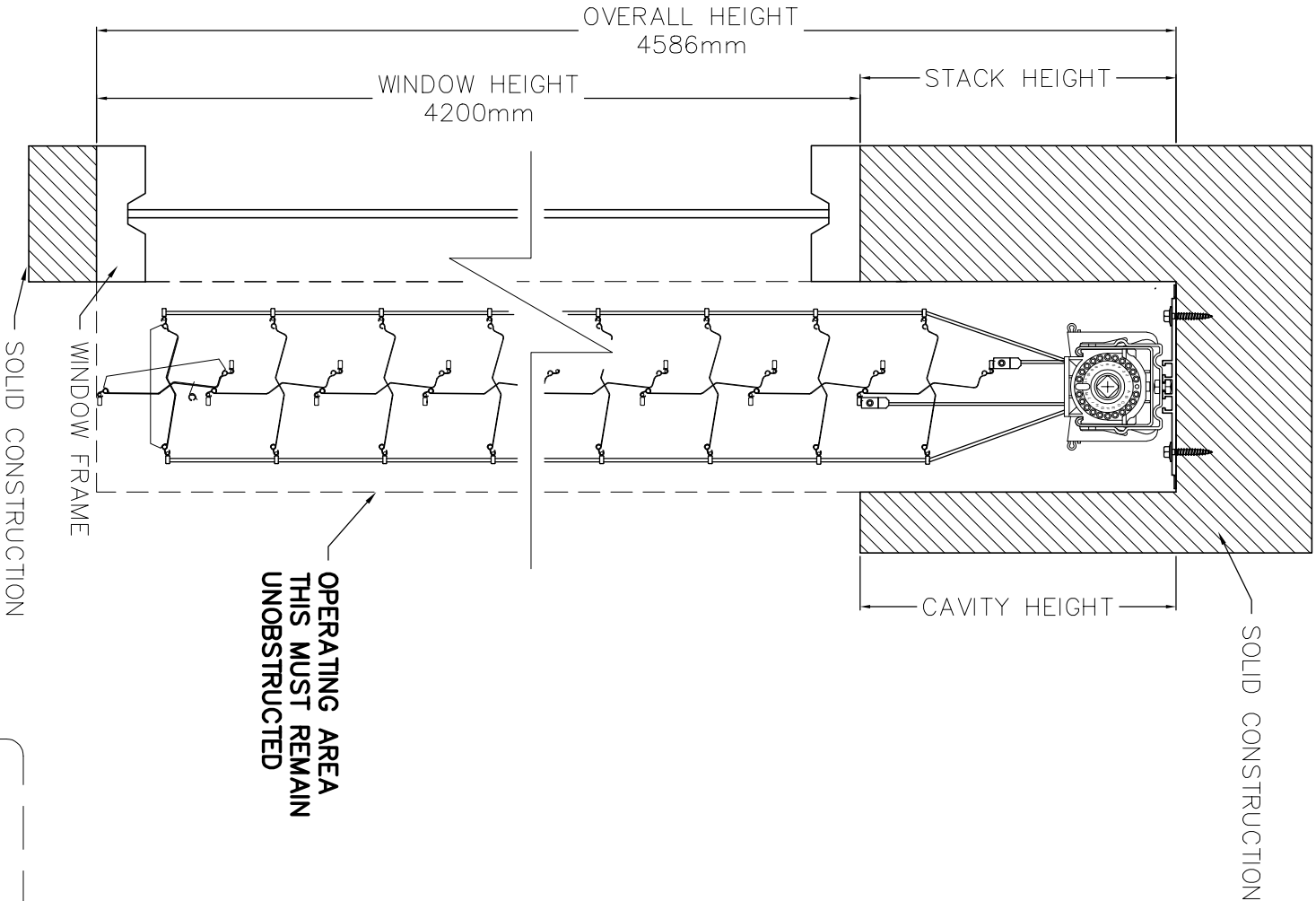
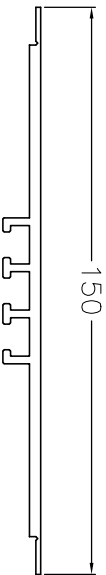


TABLE 1
CALCULATION OF OVERALL HEIGHT IN
EV80 TYPE C INSTALL

WINDOW HEIGHT (mm)	CAVITY HEIGHT (mm)	OVERALL HEIGHT (mm)
900	215	1115
1050	220	1270
1200	225	1425
1350	235	1585
1500	240	1740
1650	250	1900
1800	260	2060
1950	275	2225
2100	285	2385
2250	295	2545
2400	305	2705
2550	310	2860
2700	330	3030
2850	340	3190
3000	355	3355
3150	365	3515
3300	375	3665
3450	390	3840
3600	400	4000
3750	410	4160
3900	420	4320
4050	430	4480
4200	450	4650
4350	460	4810
4500	470	4970
4650	480	5130
4800	490	5290

TYPE C MOUNTING PLATE

DIMENSIONS



PLANNED USE OF AWNING WINDOWS, STORM BARS, FUTURE INSTALLATION OF DOOR HARDWARE AND OTHER ITEMS THAT MAY CAUSE POSSIBLE INTERFERENCE MUST BE TAKEN INTO CONSIDERATION AND AVOIDED

NOTES

- PELMET TYPE C MOUNTING PLATE – DESIGNED TO CONCEAL THE STACK
- HEIGHT OF THE EV80'S FOR WINDOWS UP TO 4800mm HIGH
- ARCHITECT TO REFERENCE NOMINAL WINDOW HEIGHTS PROVIDED TO SELECT MINIMUM CAVITY HEIGHTS NEEDED TO ENSURE CONCEALMENT OF EV80 BLINDS

- DASHED OPERATING AREA OF BLIND MUST REMAIN UNOBSTRUCTED
- INTERFERENCE MUST BE TAKEN INTO CONSIDERATION AND AVOIDED
- FIXINGS TO BE 14G BATTEN SCREWS OR SIMILAR
- FIXING SPACING TO BE SUITABLE TO BLIND SIZE, 600mm OR SIMILAR