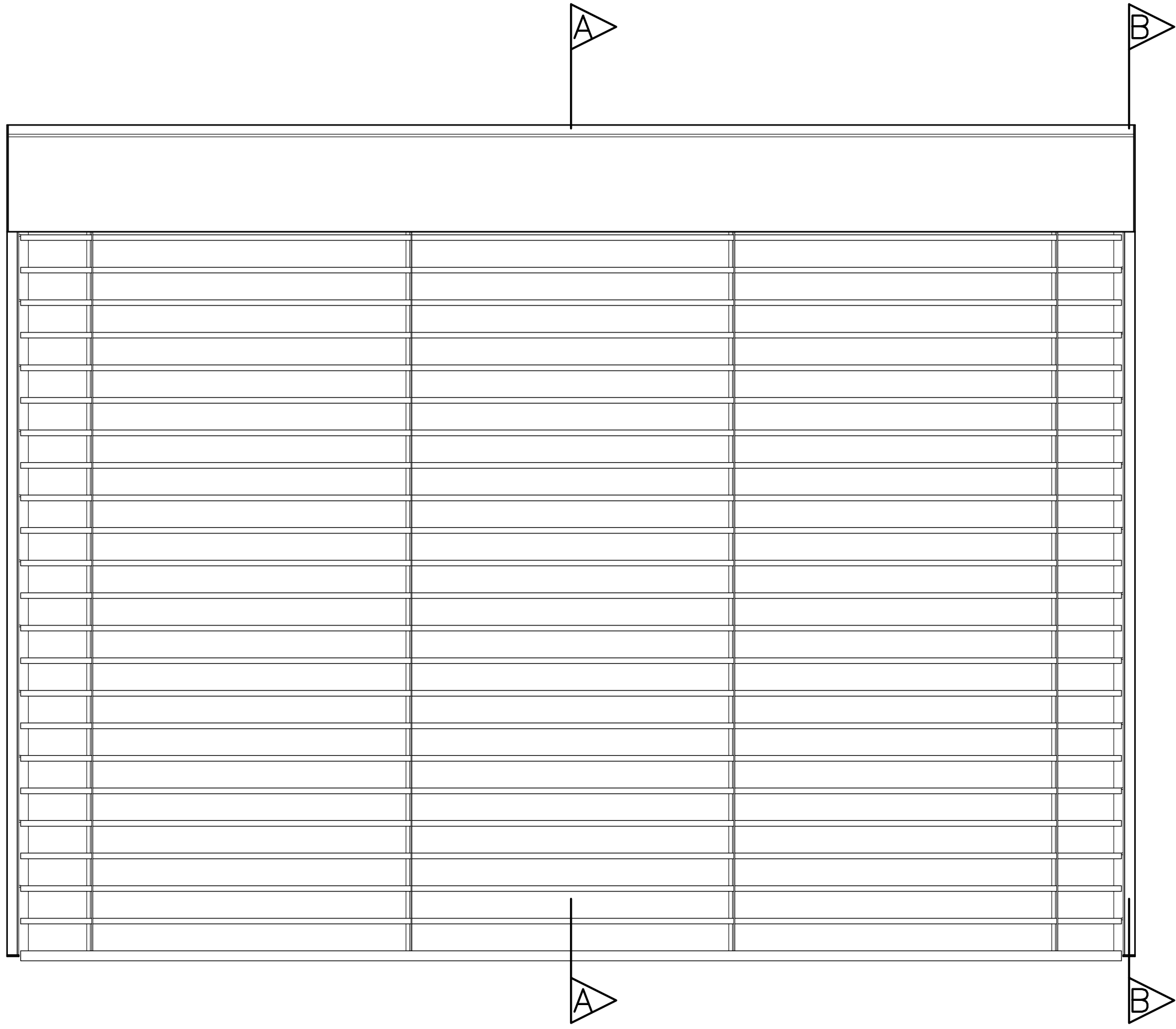


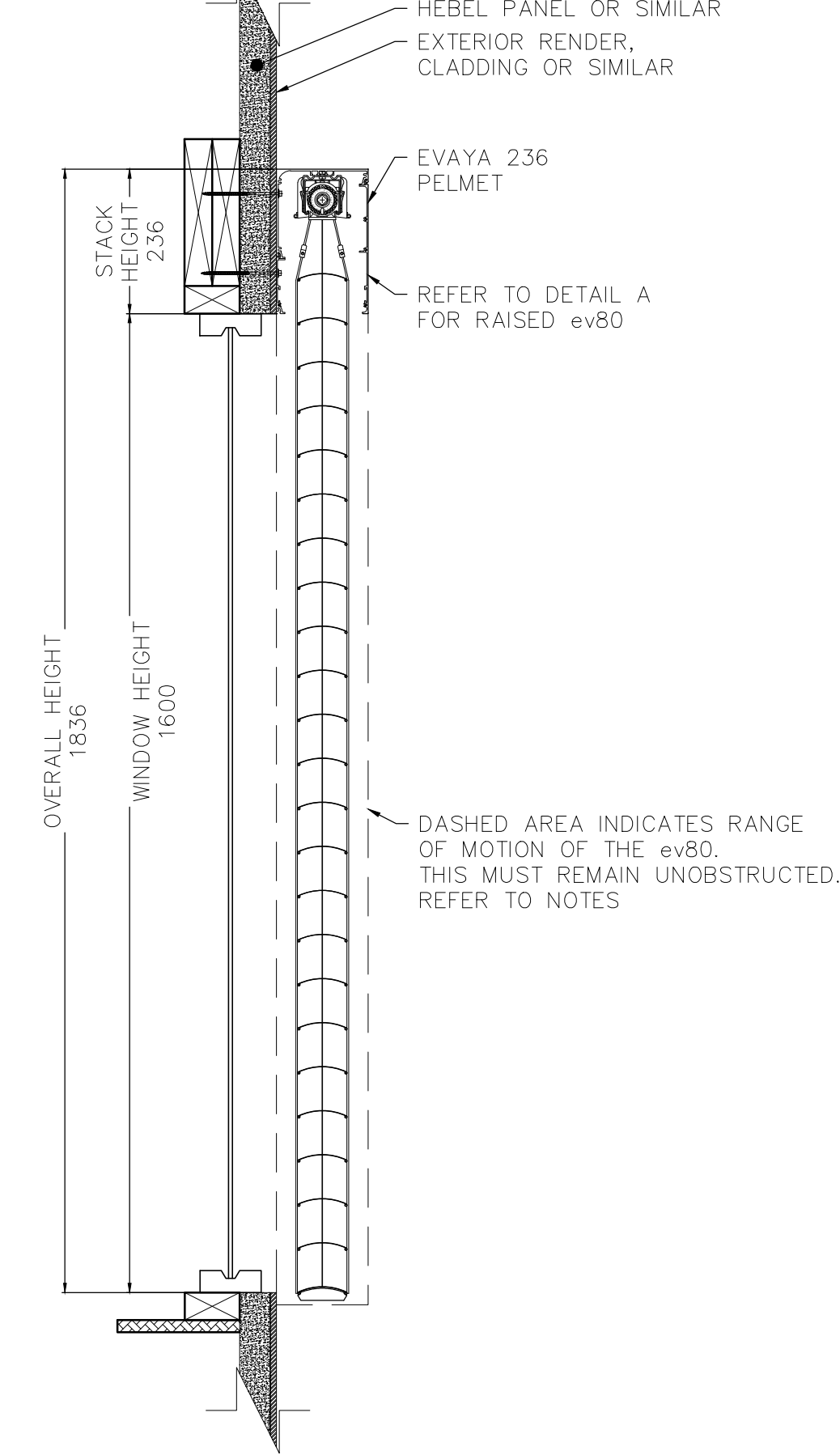
FRONT ELEVATION

TYPE A 236 PELMET WITH TYPE C SIDE CHANNELS

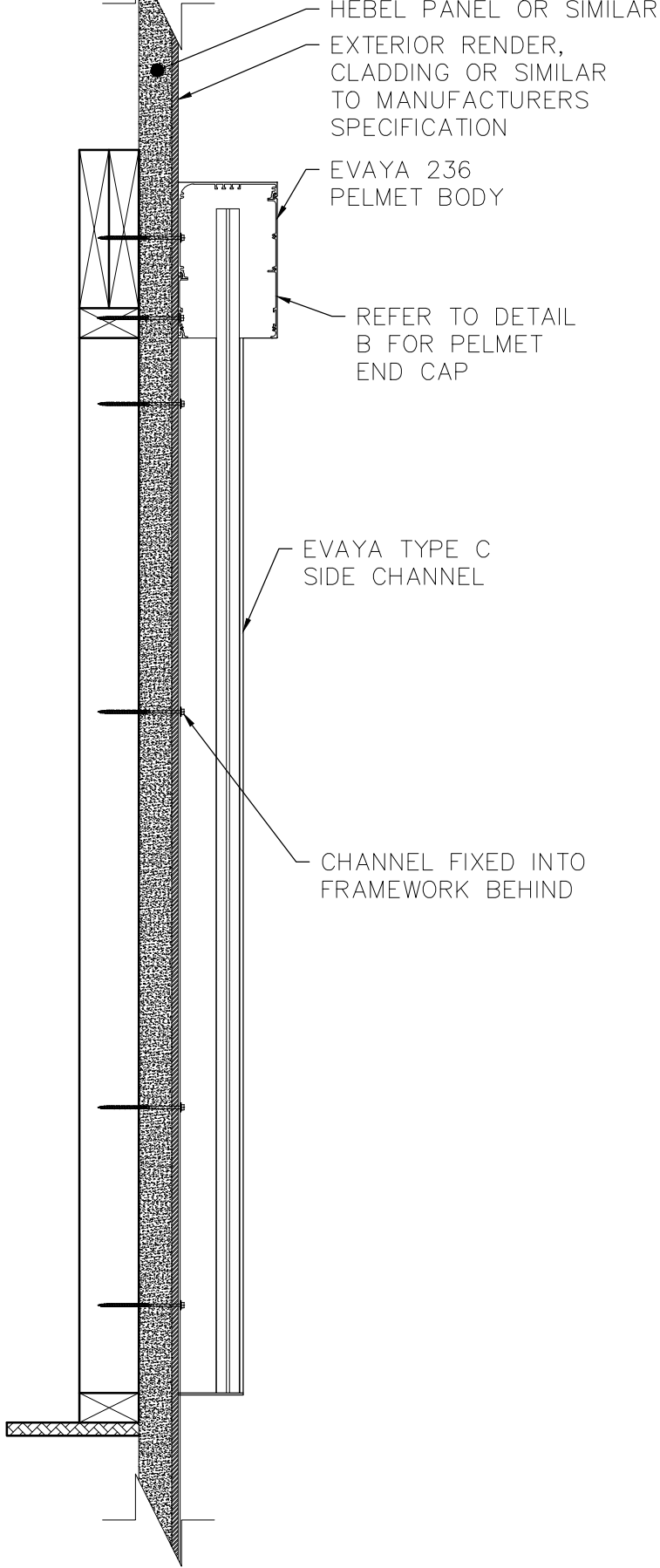


SECTION A-A

LOWERED

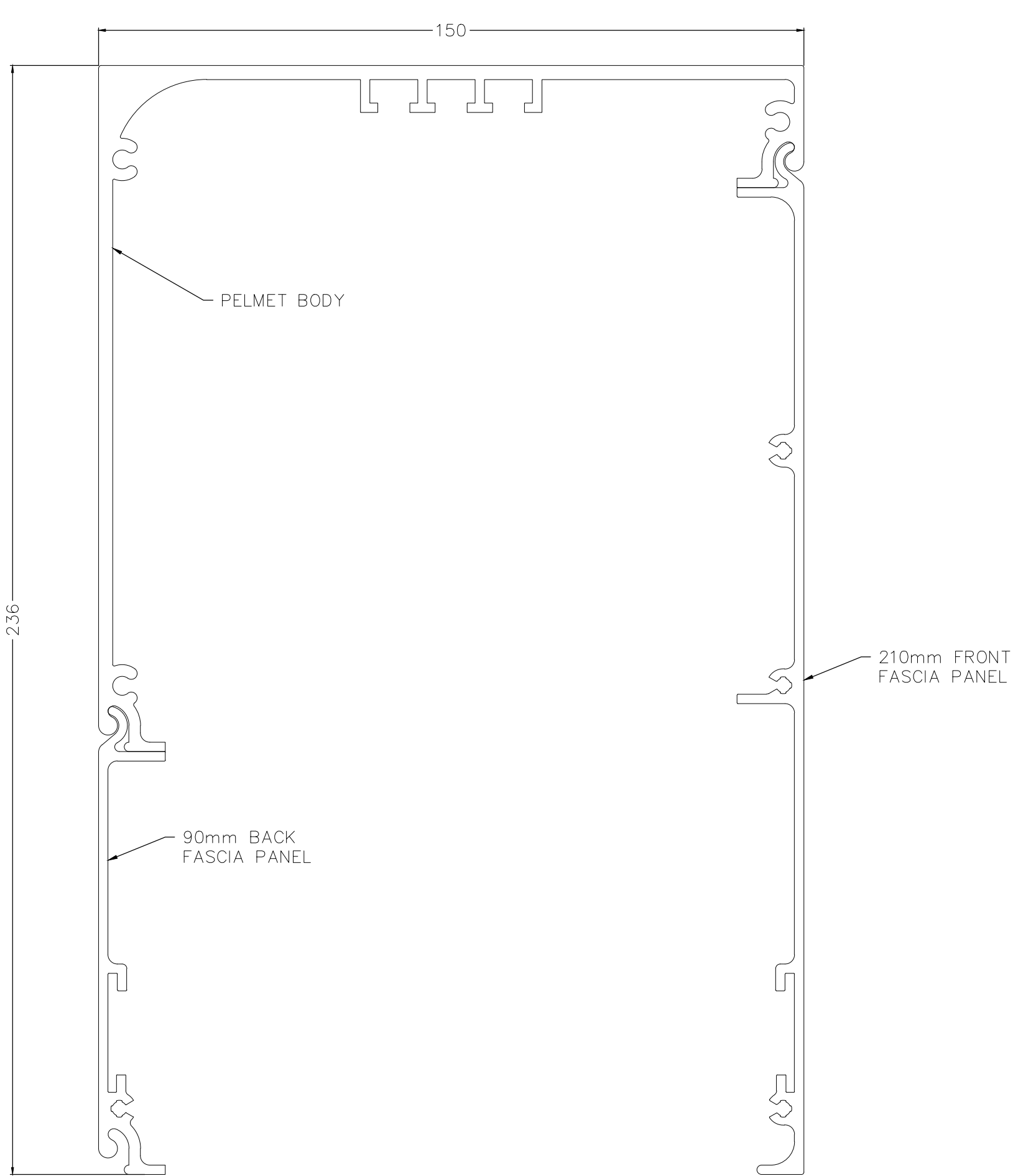


SECTION B-B



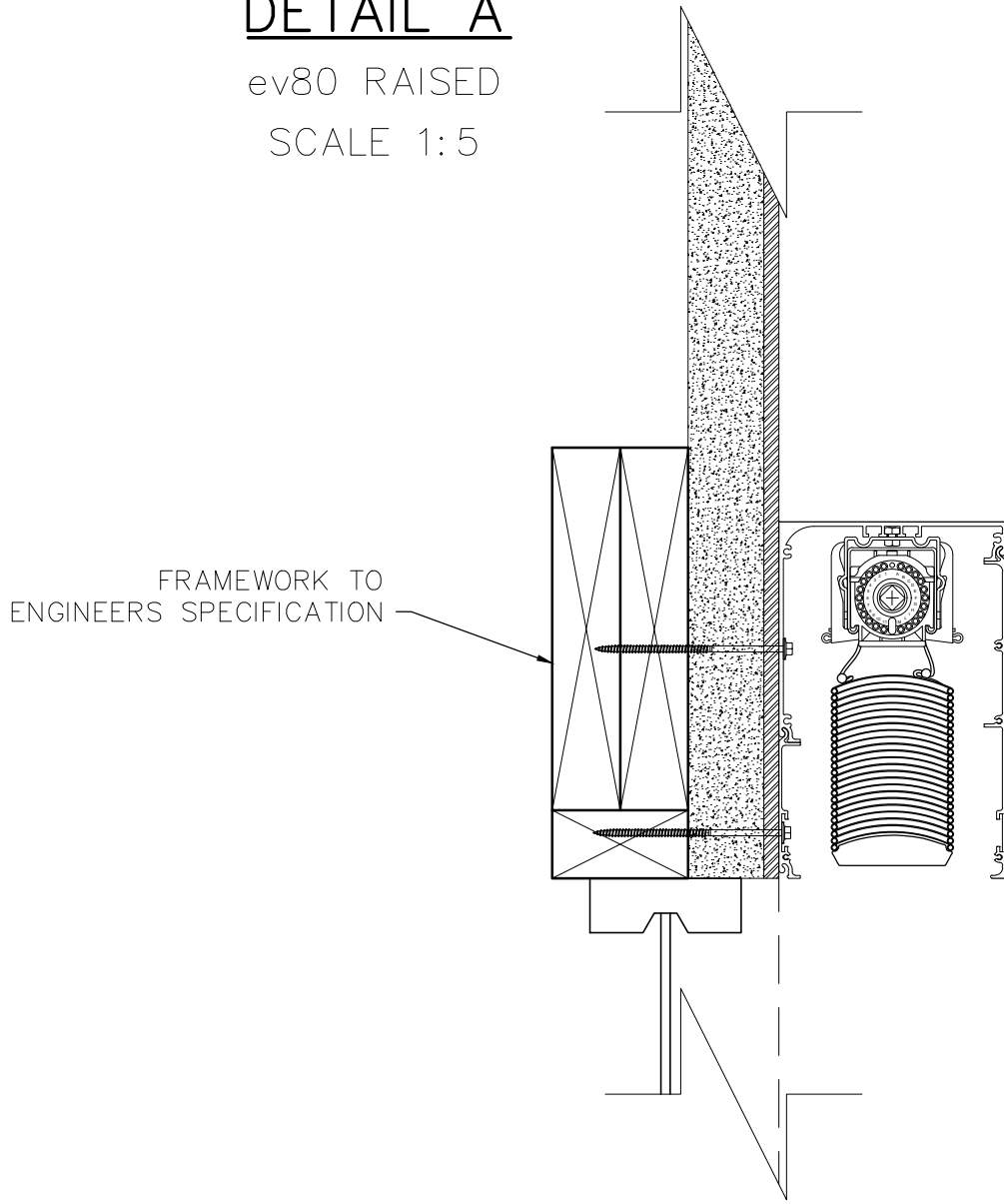
PELMET PROFILE

SCALE 1:1



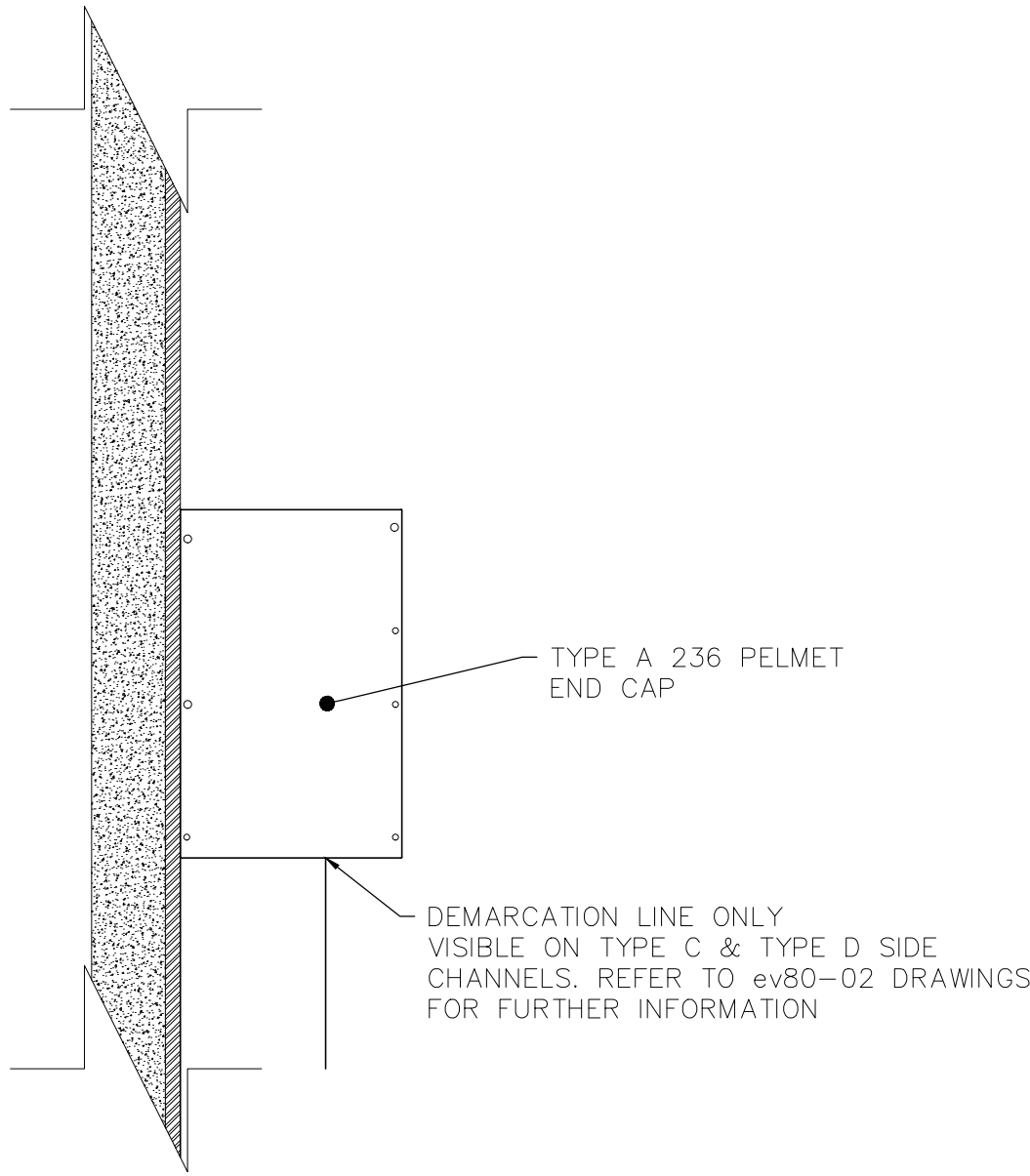
DETAIL A

ev80 RAISED
SCALE 1:5



DETAIL B

PELMET END CAP
SCALE 1:5



NOTES

- PELEMT DRAWN IS A TYPE A 236 PELMET WITH TYPE C CHANNELS, WINDOW IS 1600mm HIGH x 2400mm WIDE
- THE TYPE A 236 PELMET IS DESIGNED TO CONCEAL THE STACK HEIGHT OF THE ev80'S FOR WINDOWS UP TO 1600mm IN HEIGHT
- COMPATIBLE WITH ALL EVAYA CHANNEL TYPES, REFER TO DRAWING ev80-02 FOR FURTHER DETAIL
- TOP AND BACK FIXING POSSIBLE FOR FACE FIT AND RECESS APPLICATIONS, REFER TO DRAWING ev80-05-01 FOR FURTHER DETAIL
- DASHED AREA INDICATES RANGE OF MOTION OF THE ev80. THIS MUST REMAIN UNOBSTRUCTED
- OBSTACLES WHICH MAY CAUSE POSSIBLE INTERFERENCE INCLUDE:
 - OUTWARD OPENING AWNING WINDOWS
 - DOOR AND WINDOW HARDWARE
 - STORMBARS
 - ETC

TYPE A 236 PELMET

01 PELMET - TECHNICAL

SCALE 1:10 @ A1	DRAWING NO. ev80-01-01.A	SHEET 3 OF 20
BY SK	DATE AUG'25	CLIENT
CHECKED PA	DATE AUG'25	ADDRESS