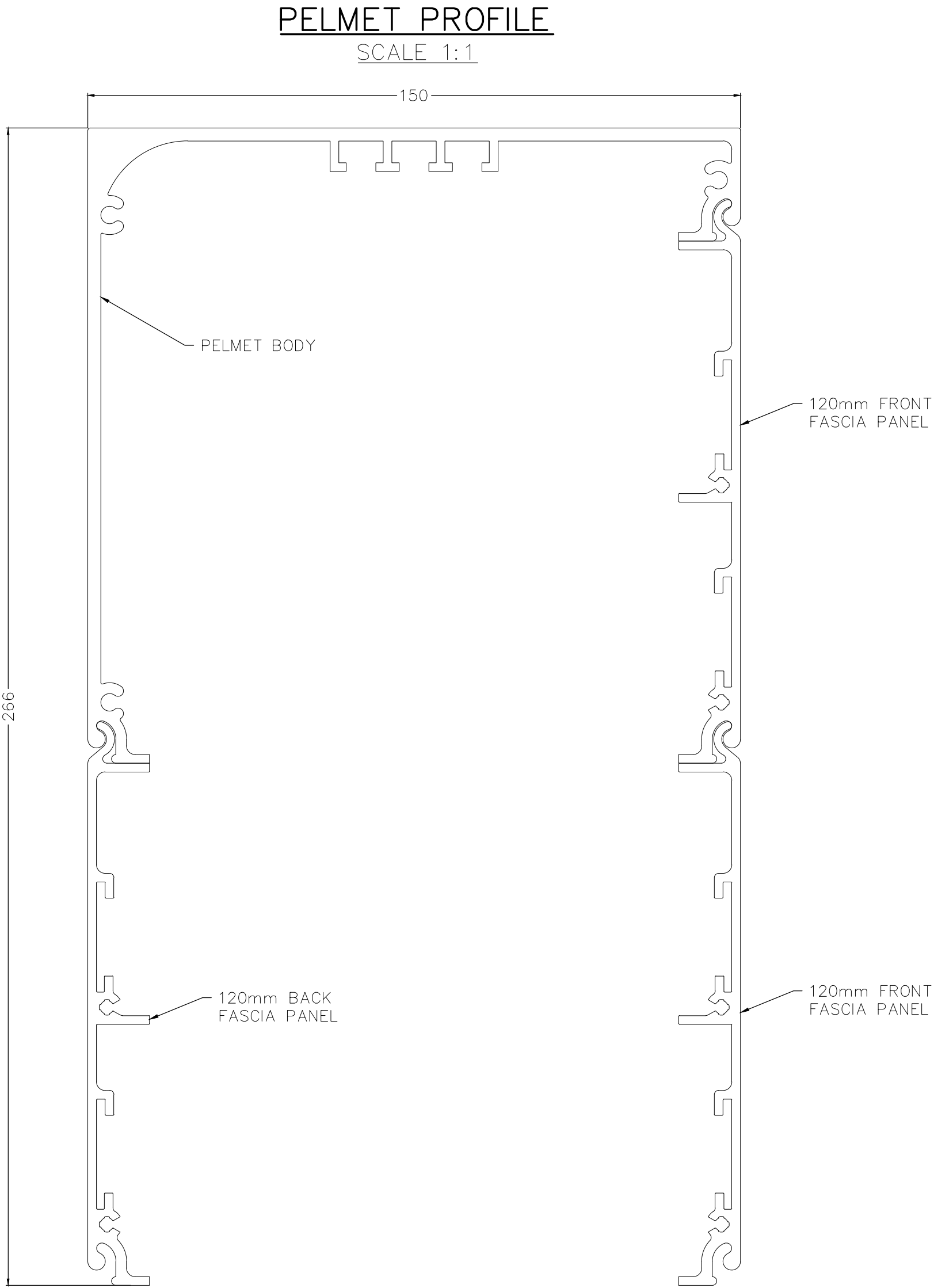
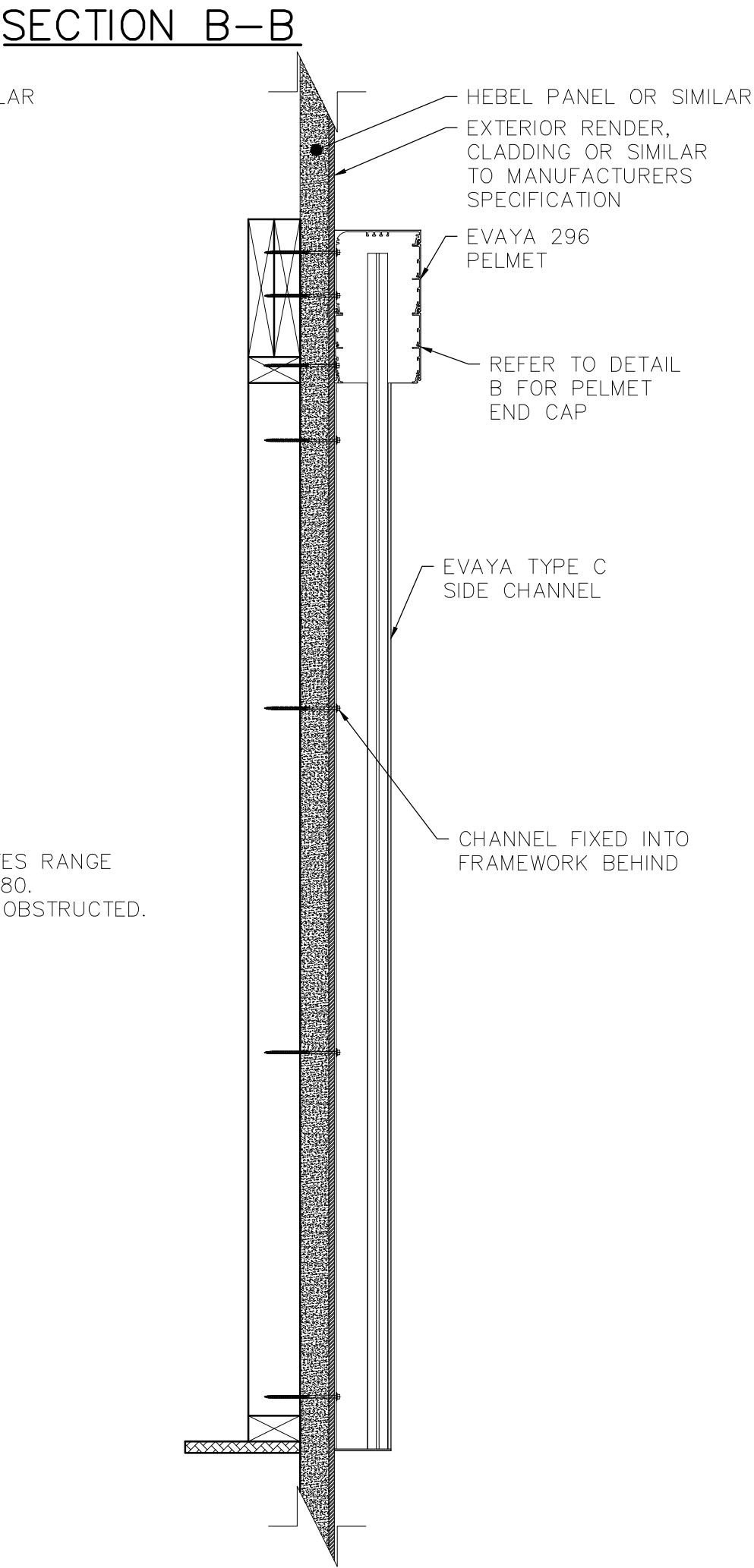
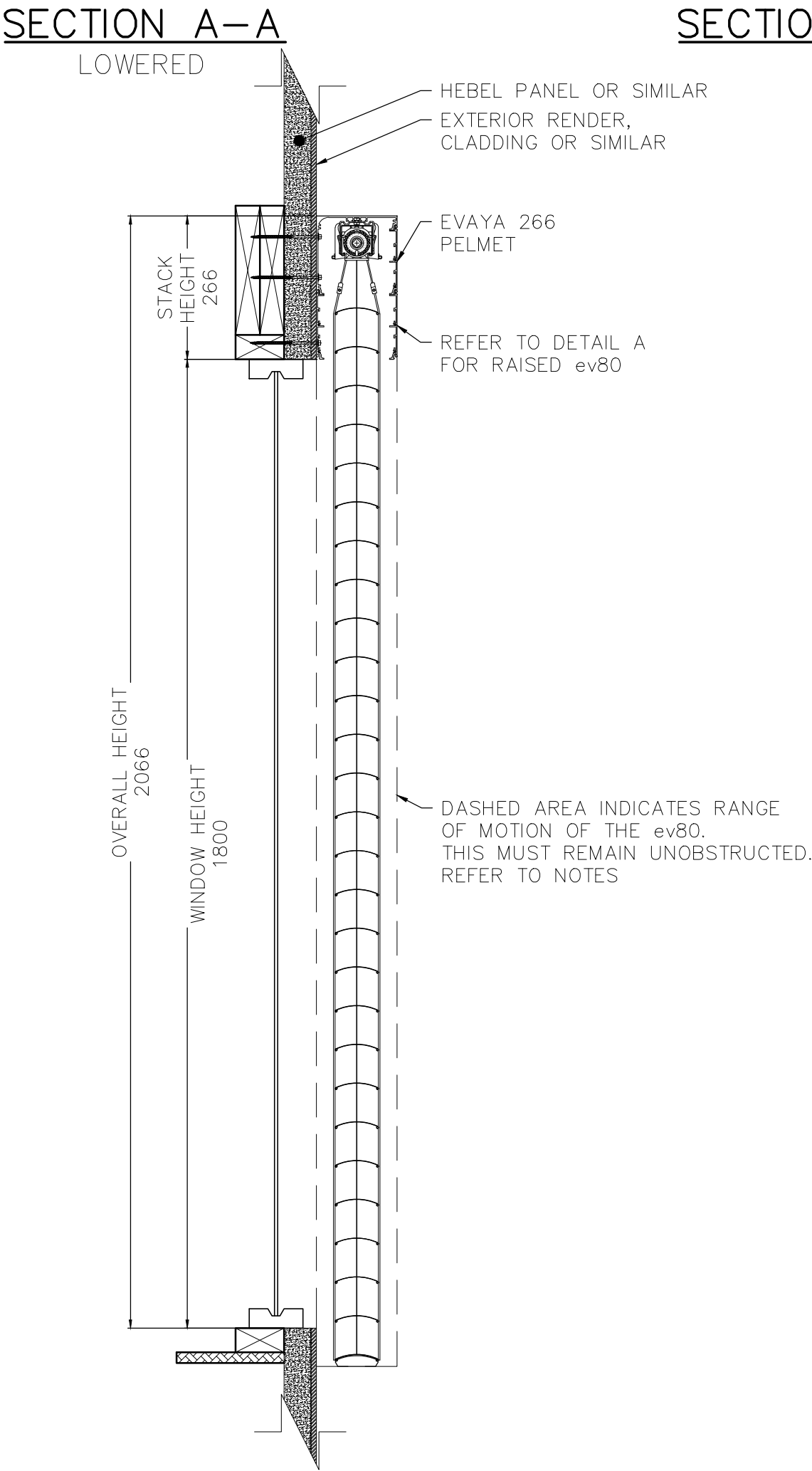
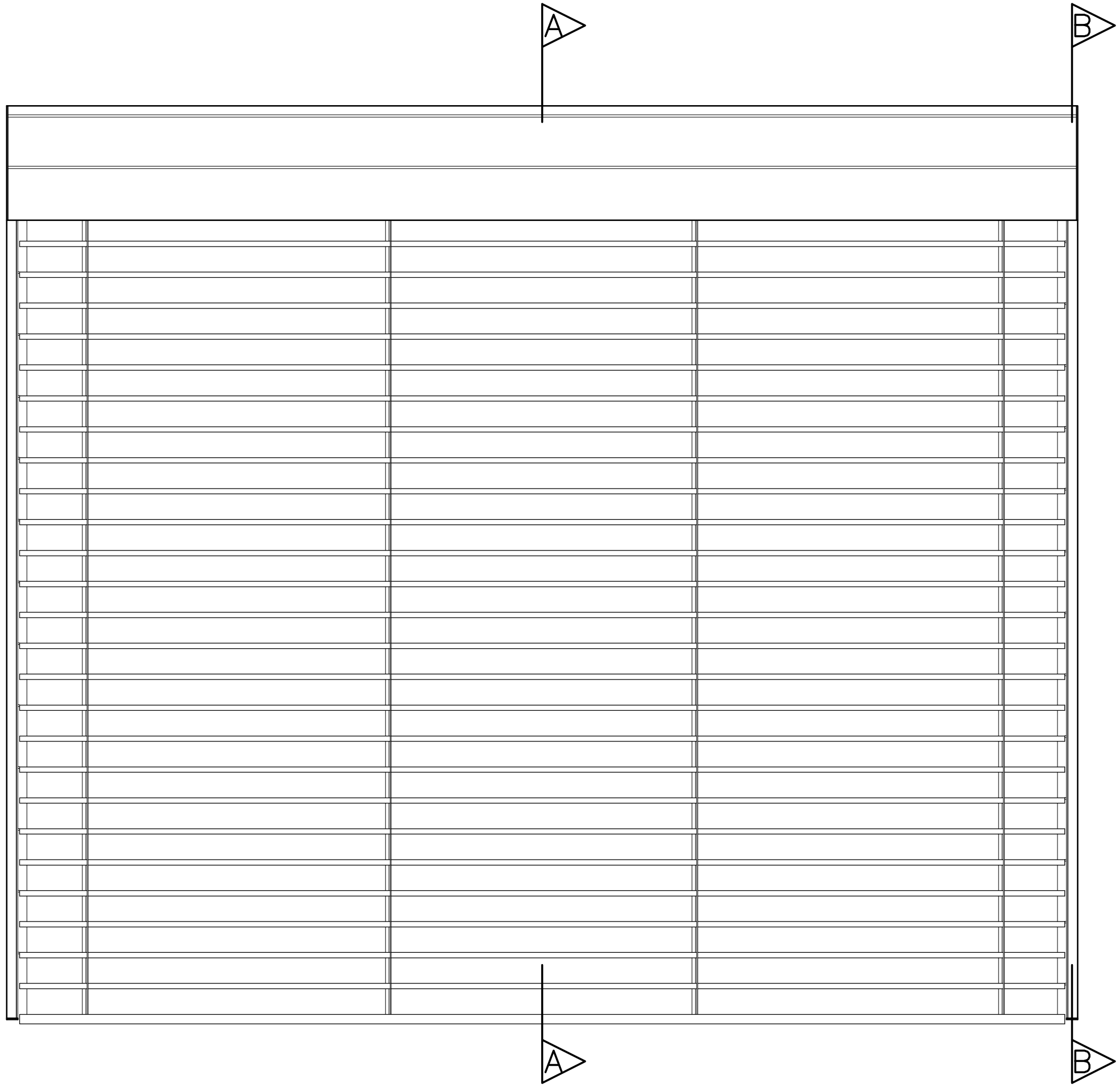
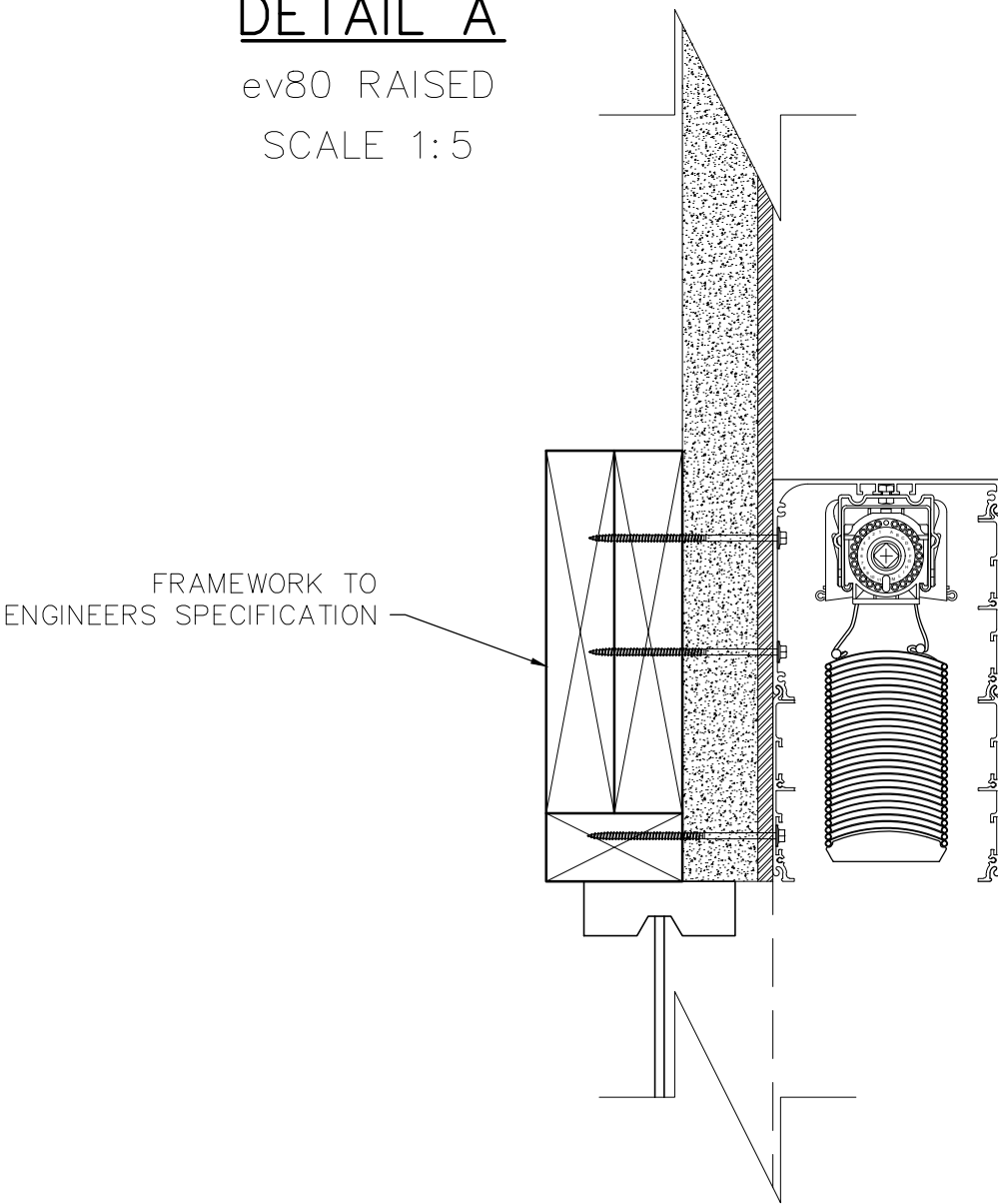


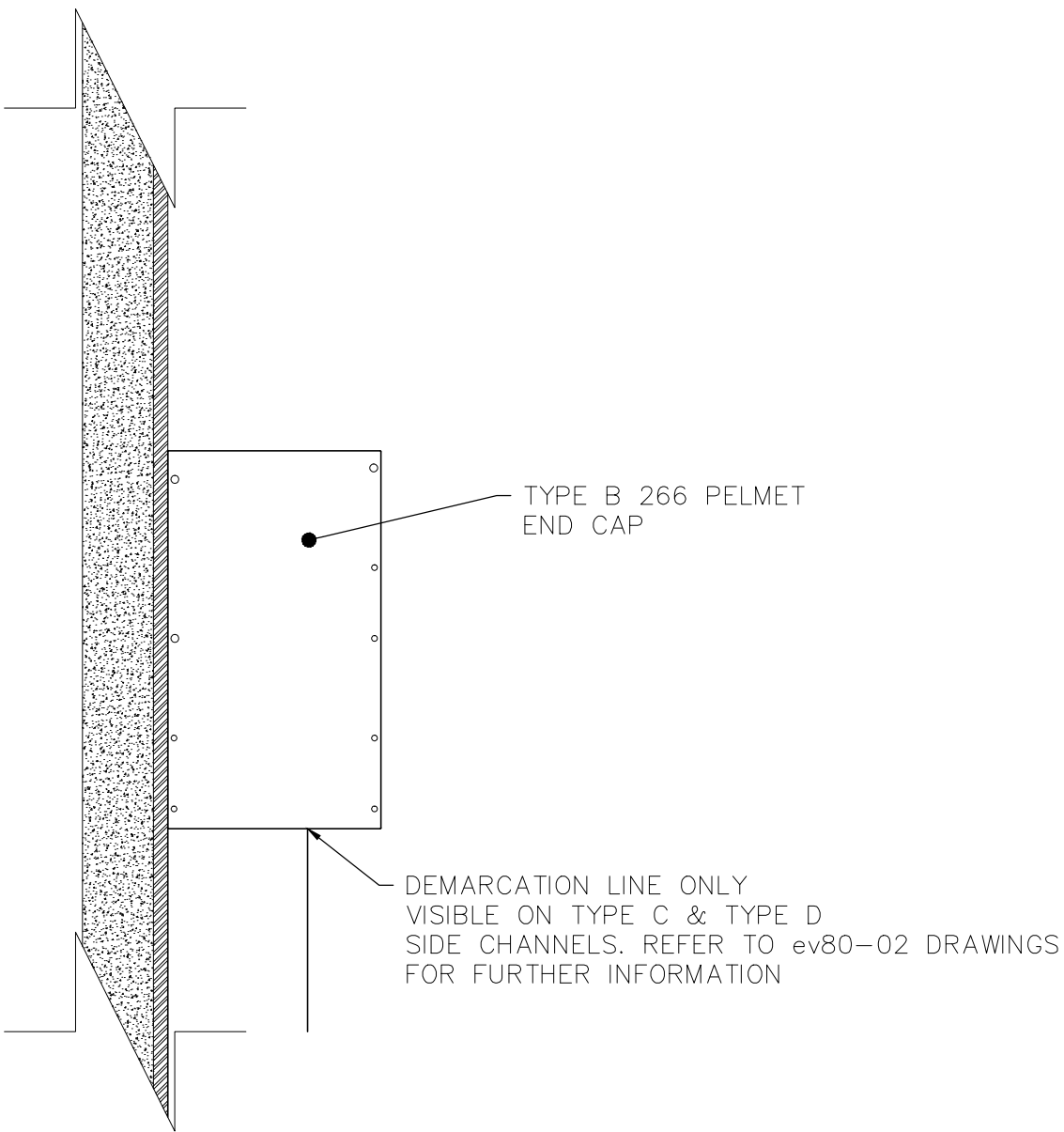
FRONT ELEVATION
266 PELMET WITH TYPE C SIDE CHANNELS



DETAIL A
ev80 RAISED
SCALE 1:5



DETAIL B
PELMET END CAP
SCALE 1:5



NOTES

- PELEMT DRAWN IS A 296 PELMET WITH TYPE C CHANNELS, WINDOW IS 2700mm HIGH x 2400mm WIDE
- THE 296 PELMET IS DESIGNED TO CONCEAL THE STACK HEIGHT OF THE ev80'S FOR WINDOWS UP TO 2400mm IN HEIGHT
- COMPATIBLE WITH ALL EVAYA CHANNEL TYPES, REFER TO DRAWING ev80-02 FOR FURTHER DETAIL
- TOP AND BACK FIXING POSSIBLE FOR FACE FIT AND RECESS APPLICATIONS, REFER TO DRAWING ev80-05-01 FOR FURTHER DETAIL
- DASHED AREA INDICATES RANGE OF MOTION OF THE ev80. THIS MUST REMAIN UNOBSTRUCTED
- OBSTACLES WHICH MAY CAUSE POSSIBLE INTERFERENCE INCLUDE:
 - OUTWARD OPENING AWNING WINDOWS
 - DOOR AND WINDOW HARDWARE
 - STORMBARS
 - ETC

TYPE B 266 PELMET
01 PELMET - TECHNICAL