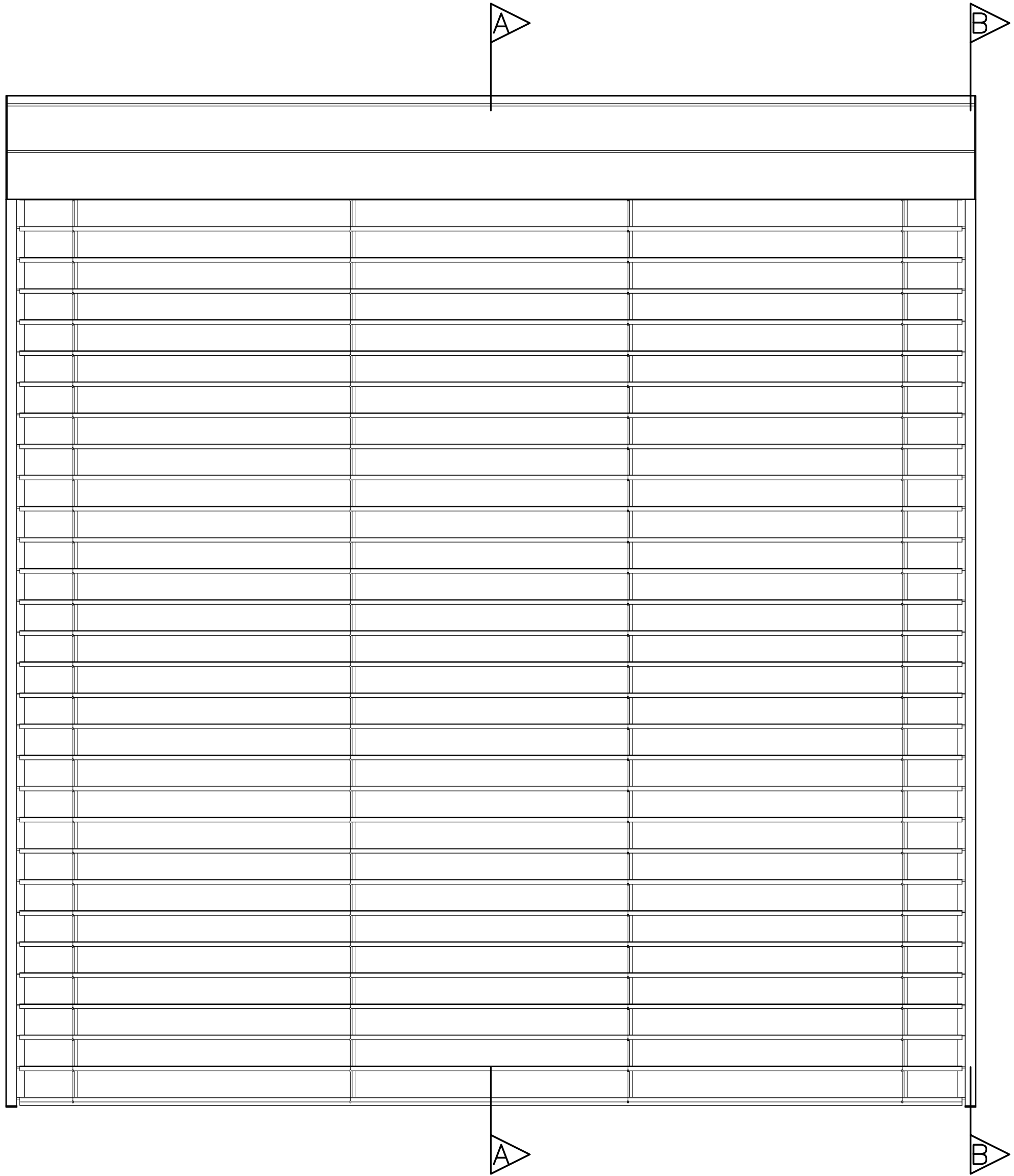


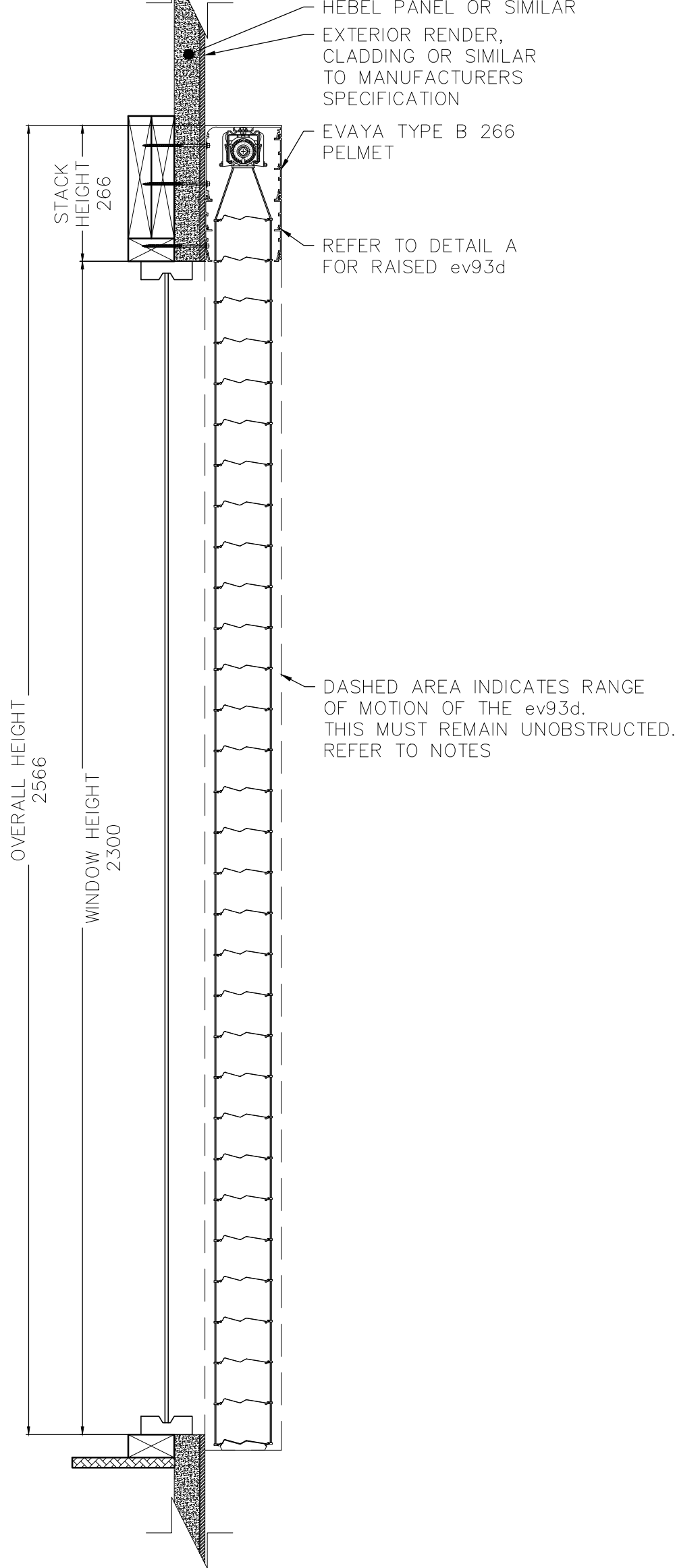
FRONT ELEVATION

TYPE B 266 PELMET WITH TYPE C SIDE CHANNELS

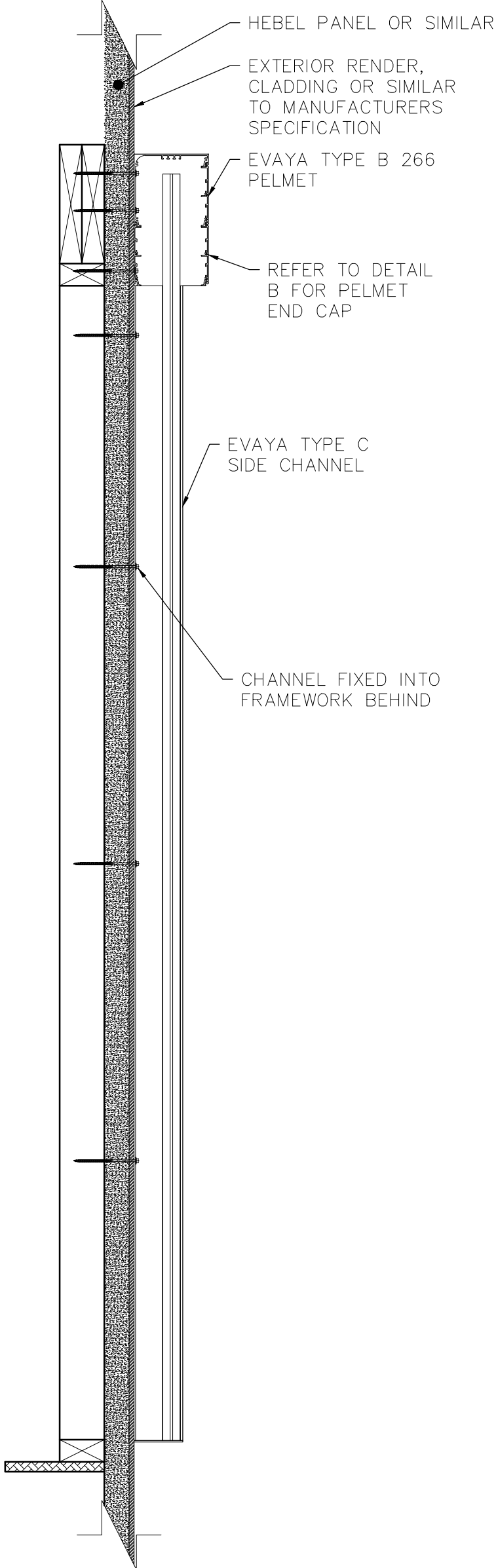


SECTION A-A

LOWERED

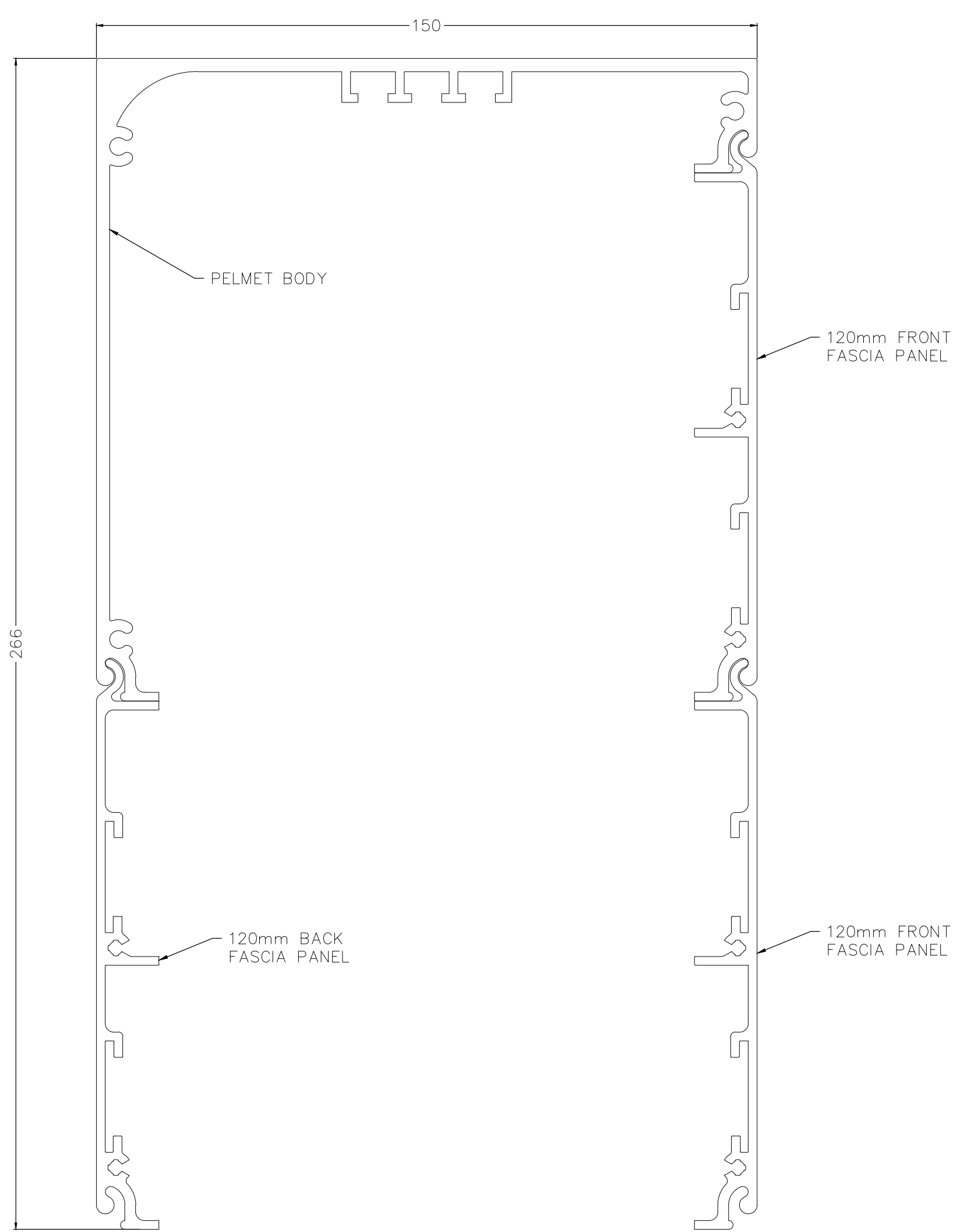


SECTION B-B



PELMET PROFILE

SCALE 1:1

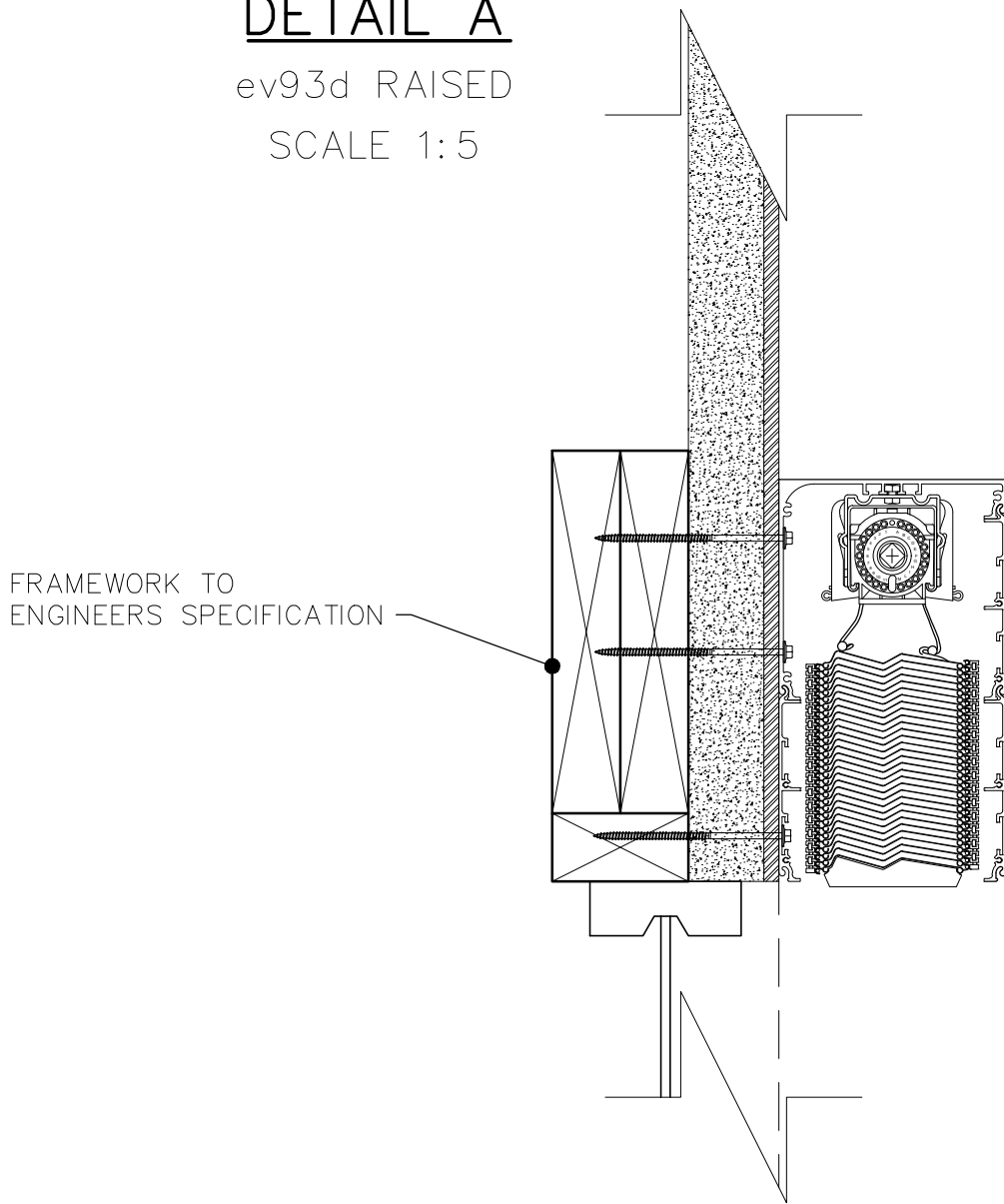


NOTES

- PELEMT DRAWN IS A TYPE B 266 PELMET WITH TYPE C CHANNELS, WINDOW IS 2300mm HIGH x 2400mm WIDE
- THE TYPE B 266 PELMET IS DESIGNED TO CONCEAL THE STACK HEIGHT OF THE ev93d'S FOR WINDOWS UP TO 2300mm IN HEIGHT
- COMPATIBLE WITH ALL EVAYA CHANNEL TYPES, REFER TO DRAWING ev93d-02 FOR FURTHER DETAIL
- TOP AND BACK FIXING POSSIBLE FOR FACE FIT AND RECESS APPLICATIONS, REFER TO DRAWING ev93d-05-01 FOR FURTHER DETAIL
- DASHED AREA INDICATES RANGE OF MOTION OF THE ev93d. THIS MUST REMAIN UNOBSTRUCTED
- OBSTACLES WHICH MAY CAUSE POSSIBLE INTERFERENCE INCLUDE:
  - OUTWARD OPENING AWNING WINDOWS
  - DOOR AND WINDOW HARDWARE
  - STORMBARS
  - ETC

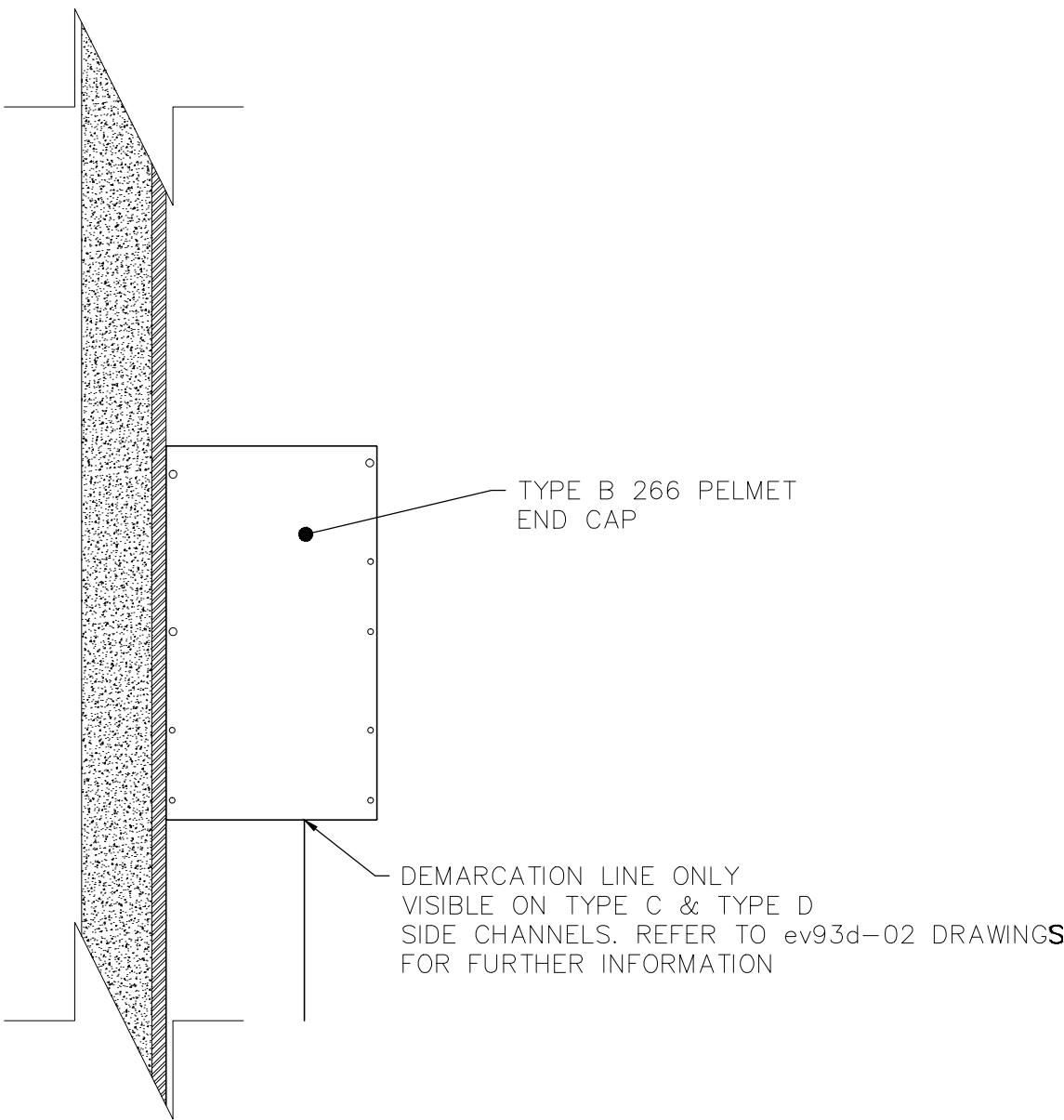
DETAIL A

ev93d RAISED  
SCALE 1:5



DETAIL B

PELMET END CAP  
SCALE 1:5



evaya

EVAYA  
4 SUFFOLK STREET, CAPEL SOUND, 3940, VIC AUSTRALIA  
PHONE +61 (03) 5986 2183, SALES@EVAYA.COM.AU

THIS DRAWING MUST BE READ IN CONJUNCTION  
WITH ALL OTHER RELEVANT DOCUMENTATION.  
DO NOT SCALE DRAWINGS. CHECK AND VERIFY  
ALL DIMENSIONS ON SITE PRIOR TO INSTALL.

THIS DRAWING MAY NOT BE COPIED,  
COMMUNICATED TO ANY PERSON OR  
USED FOR MANUFACTURE WITHOUT THE  
EXPRESS WRITTEN CONSENT OF EVAYA.

TYPE B 266 PELMET

01 PELMET - TECHNICAL

SCALE 1:10 @ A1	DRAWING NO. ev93d-01-02.A	SHEET 1 of 1
BY SK	DATE NOV'25	CLIENT
CHECKED PA	DATE NOV'25	ADDRESS