

FRONT ELEVATION

TYPE B 326 PELMET WITH TYPE C SIDE CHANNELS

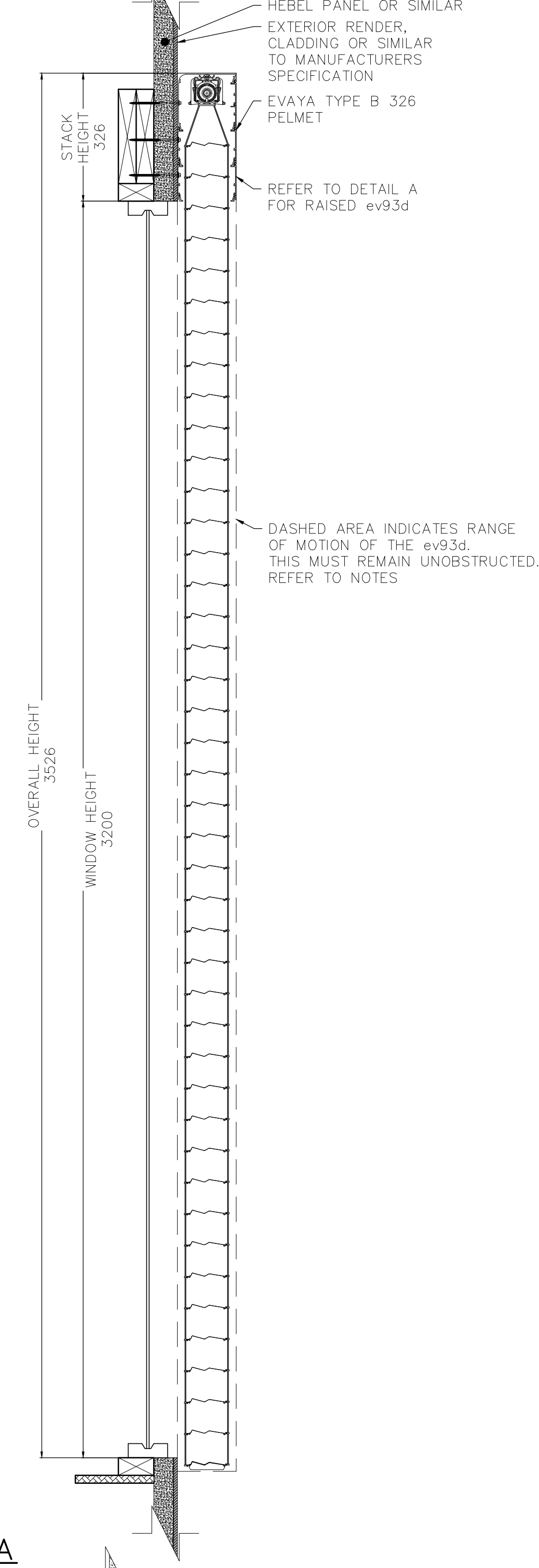


NOTES

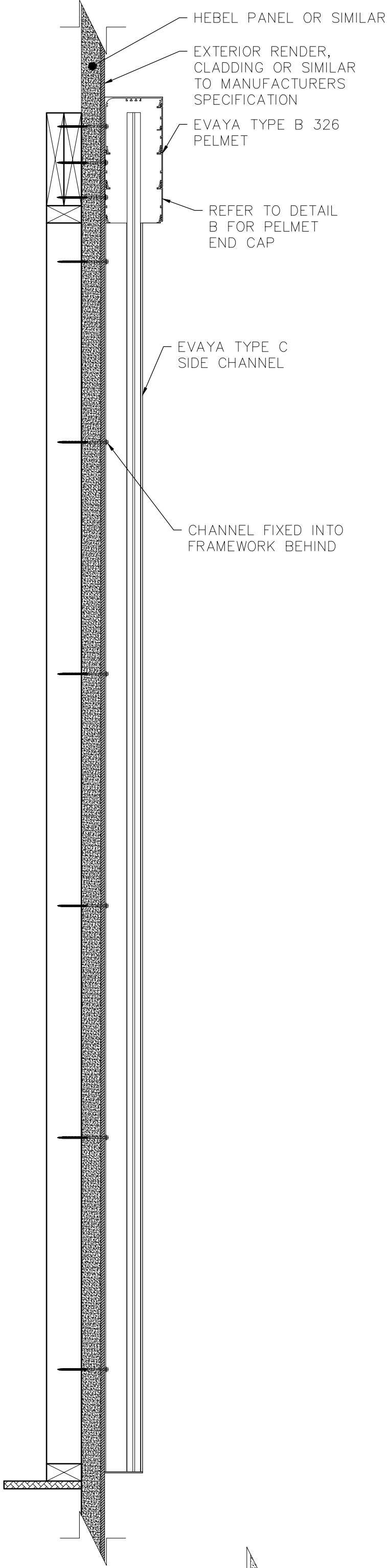
- PELEMT DRAWN IS A TYPE B 326 PELMET WITH TYPE C CHANNELS, WINDOW IS 3200mm HIGH x 2400mm WIDE
- THE TYPE B 326 PELMET IS DESIGNED TO CONCEAL THE STACK HEIGHT OF THE ev93d'S FOR WINDOWS UP TO 3200mm IN HEIGHT
- COMPATIBLE WITH ALL EVAYA CHANNEL TYPES, REFER TO DRAWING ev93d-02 FOR FURTHER DETAIL
- TOP AND BACK FIXING POSSIBLE FOR FACE FIT AND RECESS APPLICATIONS, REFER TO DRAWING ev93d-05-01 FOR FURTHER DETAIL
- DASHED AREA INDICATES RANGE OF MOTION OF THE ev93d. THIS MUST REMAIN UNOBSTRUCTED
- OBSTACLES WHICH MAY CAUSE POSSIBLE INTERFERENCE INCLUDE:
 - OUTWARD OPENING AWNING WINDOWS
 - DOOR AND WINDOW HARDWARE
 - STORMBARS
 - ETC

SECTION A-A

LOWERED

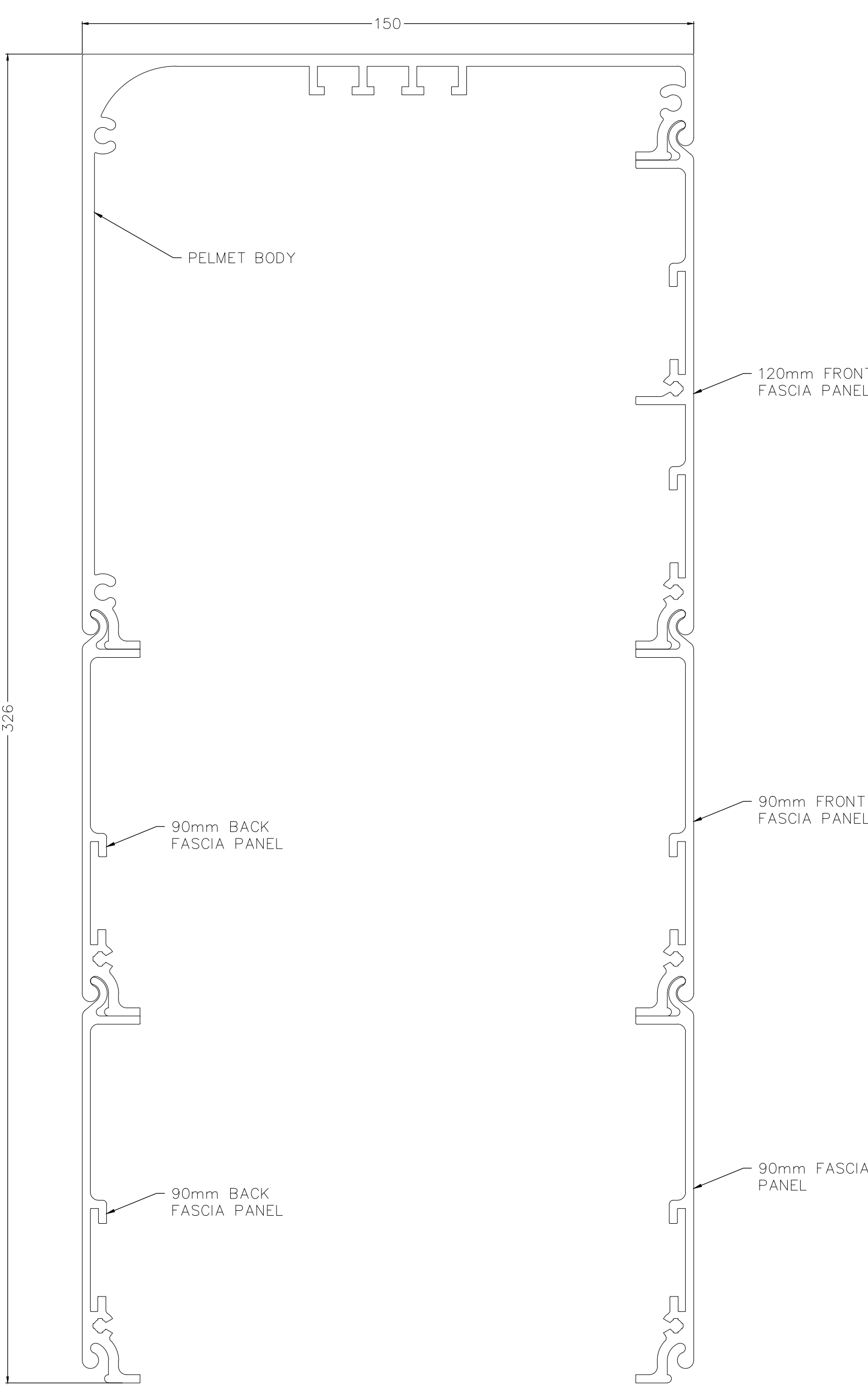


SECTION B-B



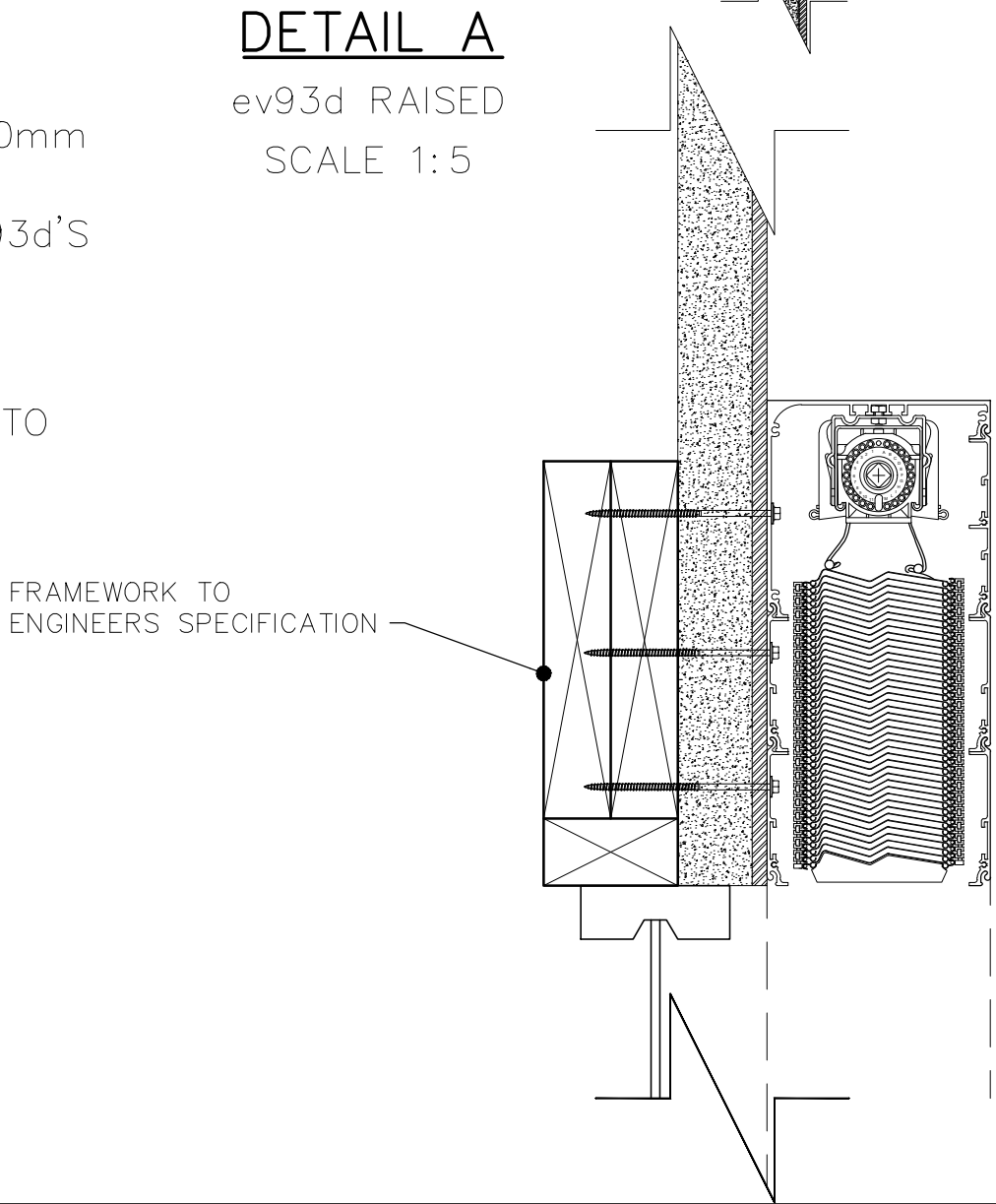
PELMET PROFILE

SCALE 1:1



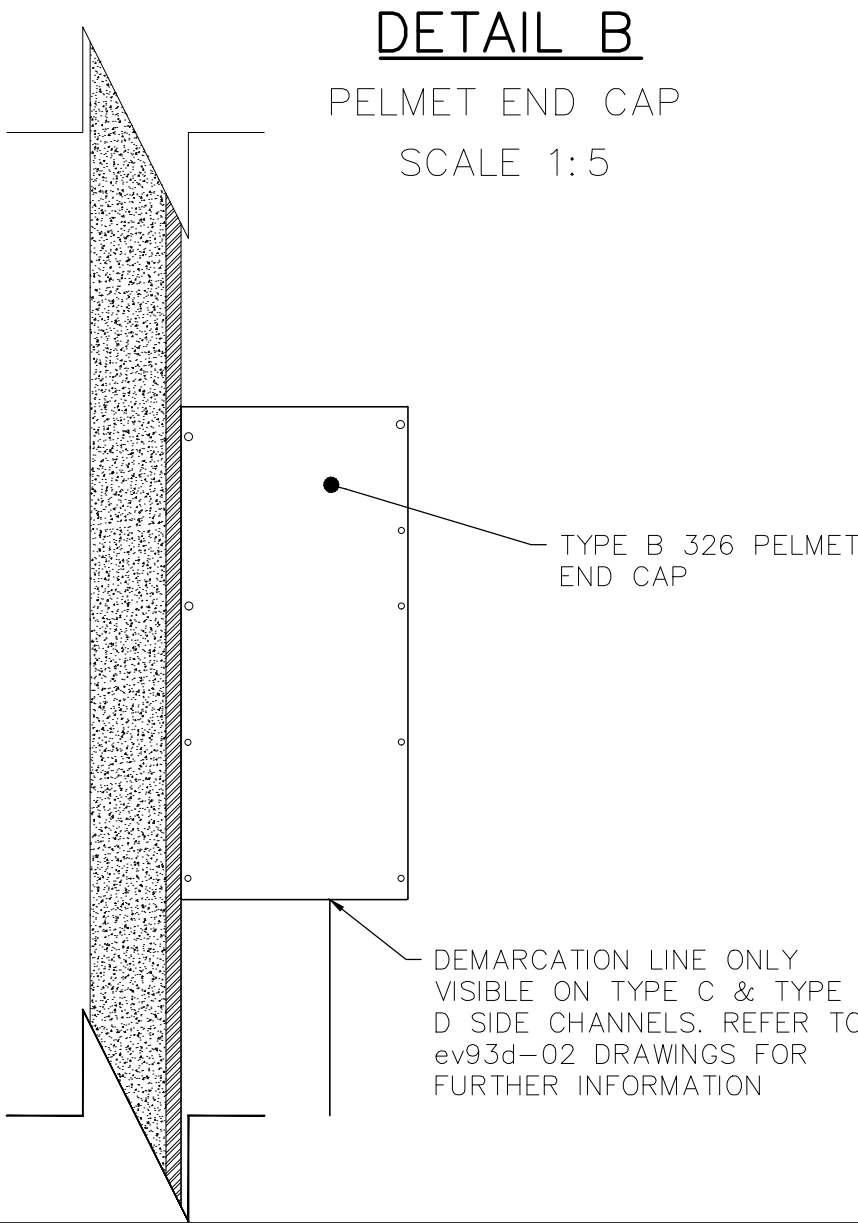
DETAIL A

ev93d RAISED
SCALE 1:5



DETAIL B

PELMET END CAP
SCALE 1:5



TYPE B 326 PELMET

01 PELMET - TECHNICAL