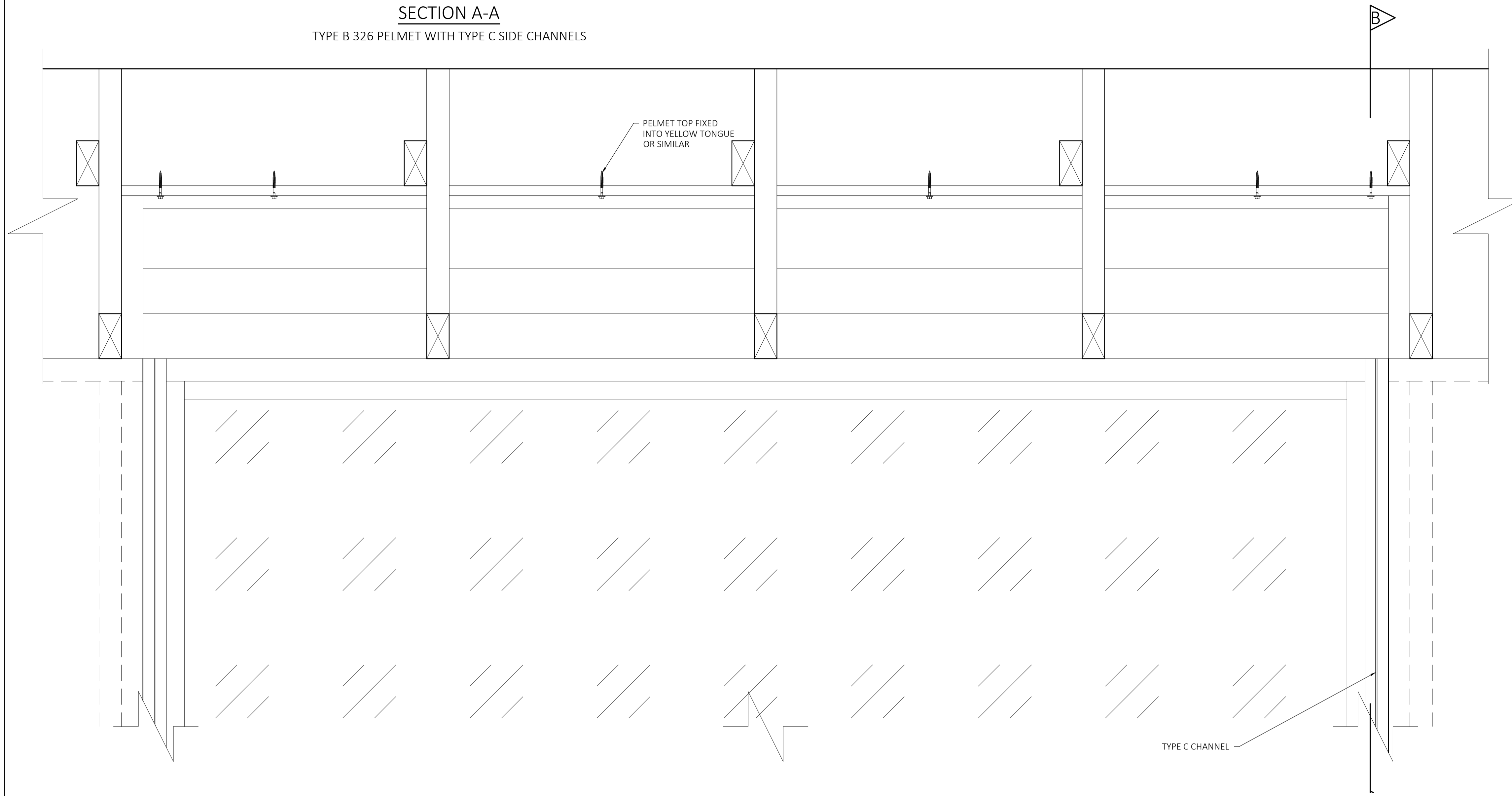
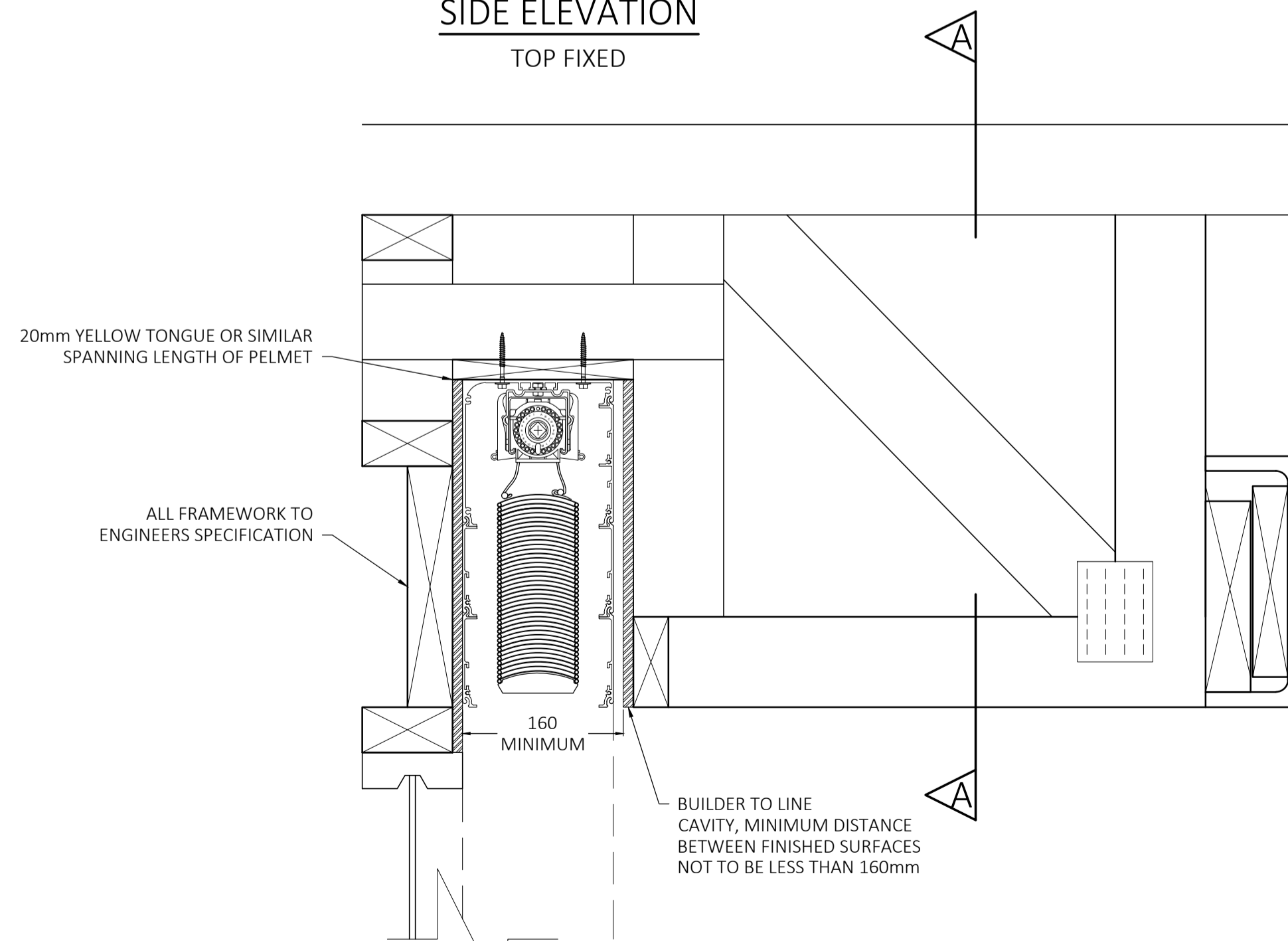


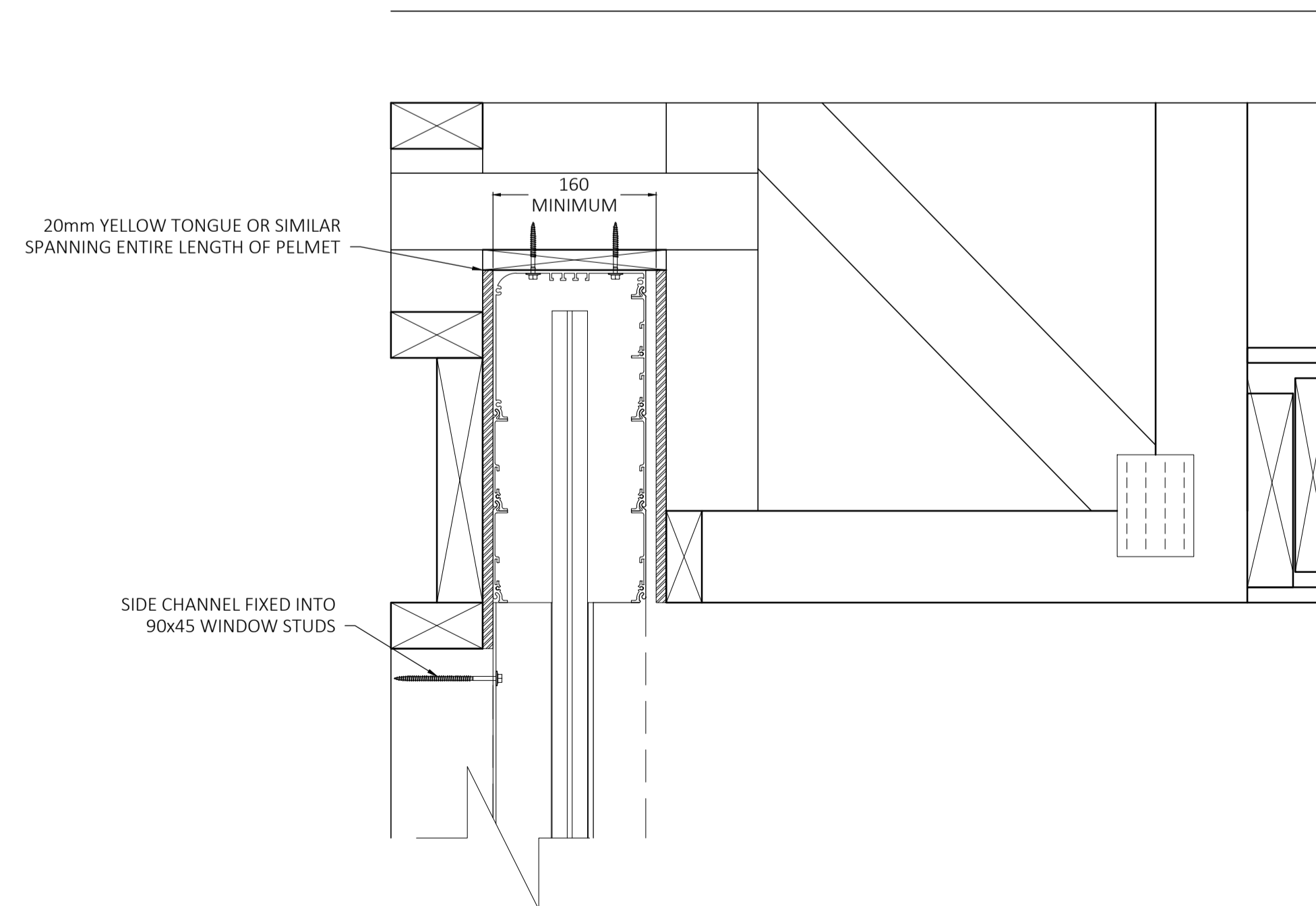
SECTION A-A
TYPE B 326 PELMET WITH TYPE C SIDE CHANNELS



SIDE ELEVATION
TOP FIXED



SECTION B-B
TOP FIXED



NOTES

- PELMET DRAWN IS A TYPE B 326 PELMET WITH TYPE C SIDE CHANNELS
- BUILDER IS TO SUPPLY ADEQUATE SOLID FIXING POINTS ABOVE, BEHIND AND ALONG THE LENGTH OF THE CAVITY TO FIX & FASTEN THE PELMET
- BUILDER IS TO SUPPLY A MINIMUM CAVITY WIDTH OF 160mm BETWEEN FINISHED SURFACES
- COMPATIBLE WITH ALL EVAYA SIDE CHANNEL TYPES
- DASHED AREA INDICATES RANGE OF MOTION OF THE ev80. THIS MUST REMAIN UNOBSTRUCTED
- INTERFERENCE MUST BE TAKEN INTO CONSIDERATION AND AVOIDED